



JohnDow
EuroVent®
Vehicle Exhaust Extraction

System Design and Parts Guide

- Rail
- Telescoping
- In-ground
- Portable

Index

"Rail" Type Systems	
Aluminum Exhaust Rail.....	3
Aluminum Rail Accessories	4
Mounting Brackets	5
Sliding Crabs & Accessories.....	6
Exhaust Hose & Adapters	7
QuickLink™ Tailpipe Adapters	8 - 9
Tailpipe Adapters	10
"Fixed" Overhead Systems	
Hose Reels	11
Overhead Exhaust Systems	12
In-ground Exhaust Systems	13
Fans & Fan Accessories	14
Portable Exhaust Extraction System	15

EuroVent Warranty

EuroVent products listed in this catalog (except aluminum rail and neoprene seal) which proves to be defective in material and workmanship within (1) one year from the date of purchase may be returned freight prepaid for repair, replacement or credit. Fan and motor warranty may be voided if the system is not installed per the manufacturers drawing.

Limited Lifetime Warranty On Aluminum Rail & Neoprene Seal

JohnDow warrants to the original purchaser that the rail and neoprene seal will be free from defects in materials and manufacture for as long as the original purchaser owns the system. The warranty does not include normal wear and tear or failure due to misuse, carelessness or any accidental cause.

Ordering Information

All orders must be placed through an authorized EuroVent distributor or sales representative.

Most orders can be shipped within a few days of the original order date. However, it is highly recommended that purchase orders be submitted at least (4) four weeks prior to the installation date to insure complete availability of product and timely shipment.

System Design

JohnDow offers to all customers complete in-house system design services for all exhaust system requirements. JohnDow will provide a system drawing along with a complete bill of materials for each system designed. Contact our Project Manager by calling 1-800-433-0708 or fax your requirements to 1-330-753-6419.

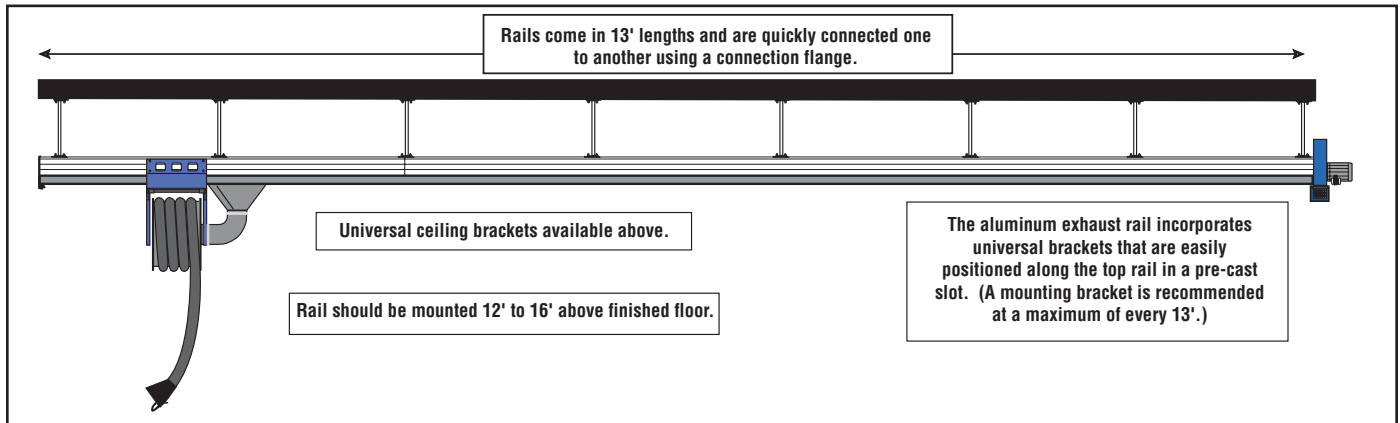
Please direct all emails to customerservice@euroventexhaust.com.

Additional Information

Additional information about EuroVent exhaust extraction systems can be obtained from our website at www.euroventexhaust.com.

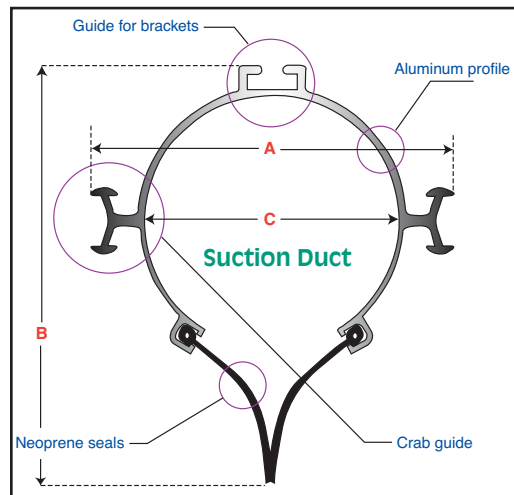
Aluminum Exhaust Rail

Rail Installation Diagram



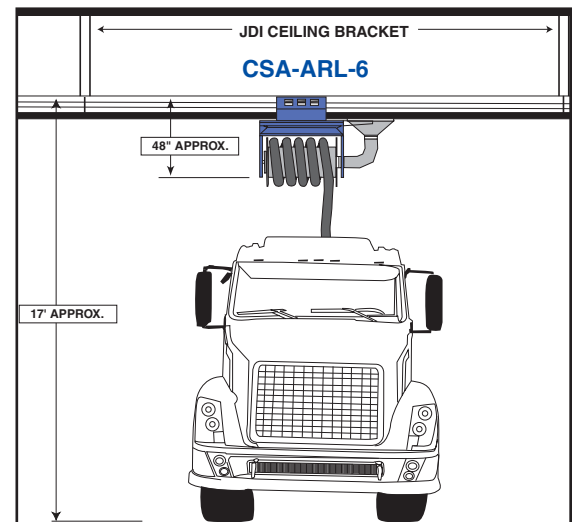
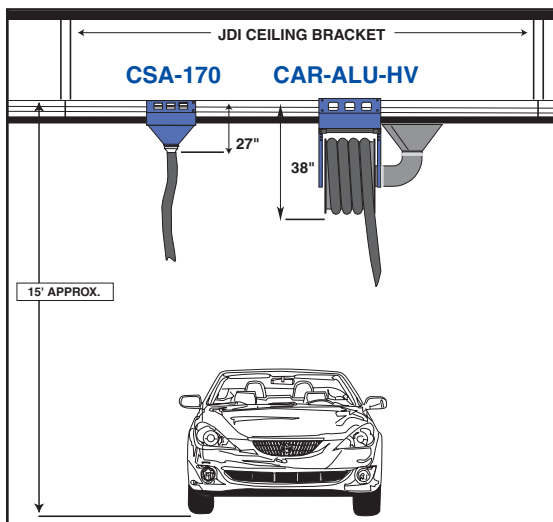
Specifications

Part No.	Description	Type	Lg	(A)	(B)	(C)	Wgt	
ALU-6	Aluminum Rail	Auto	6'	9"	10"	6"	32 lbs.	
ALU-13	Aluminum Rail	Auto	13'	9"	10"	6"	64 lbs.	
ALU-13HD	Aluminum Rail	Truck	13'	10-1/2"	11-1/2"	7"	82 lbs.	
2076-ESE	Neoprene Seal	Shipped with each rail.						



Two 1/2" x 1-1/2" structural bolts (including hex nut and washer) are shipped with each rail.

Gaps in the neoprene seal where they are spliced together must be sealed to insure proper system performance. A seal kit is provided with each system order which includes a patch, rubber prep and cement.



Aluminum Rail Accessories

Rail Flange & Duct Nozzles

Rail Connecting Flange

Used for connecting aluminum rails together.

Automotive
No. TL-170A

HD Truck
No. TL-230A

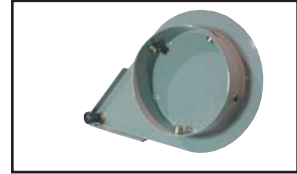


Flange Stop

Installed at the end of a rail system run.

Automotive
No. FL-170A

HD Truck
No. FL-230A

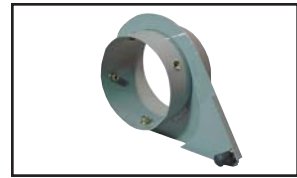


Duct Connecting Flange

Connects exhaust rail to other ducting.

Automotive
No. FCL-170A

HD Truck
No. FCL-230A

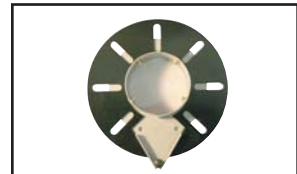


Fan Connecting Flange

Connects "rail-mount" fans to exhaust rail. Only for use on Model No. AF15 fans.

Automotive
No. FCA-170A

HD Truck
No. FCA-230A



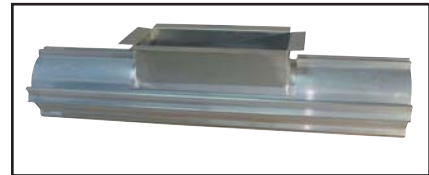
Duct Connections

Rail Vent-Tap Assembly

The rail vent-tap makes it easy to connect ducting to the middle of any EuroVent installation with a number of options for venting the system to the exhaust fan and to the outside. A 3-ft section of the aluminum rail is already slotted and fitted with a 5-3/4" x 14" flanged opening for ease of installation. The assembly will accept custom ducting or the factory designed connections shown below. The rail is installed using the TL170A rail connecting flanges.

Automotive
No. ALU-3FT-VTAP

HD Truck
No. ALU-3FT-VTAP-HD



Top Duct Connection

Attaches to Rail Vent-Tap Assembly using 1/4" self-tapping screws. The connection has a 10" diameter opening and is typically used for system designs that require the exit point to be through the roof.

Automotive
No. OF-VENT-TOP

HD Truck
No. OF-VENT-TOP-HD

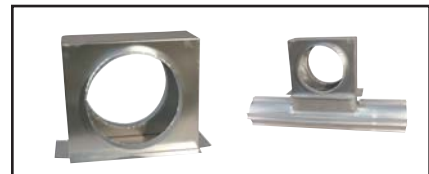


Side Duct Connection

This connection is typically used to tie two or more system runs together and where the exit point is through a sidewall. Vent has a 10" diameter opening. It attaches to the ALU-3FT-VTAP using self-tapping 1/4" screws.

Automotive
No. OF-VENT-SIDE

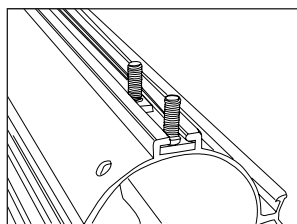
HD Truck
No. OF-VENT-SIDE-HD



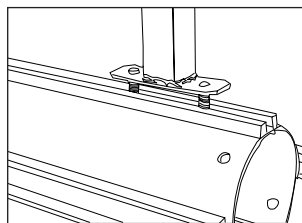
Mounting Brackets

Aluminum rails can be mounted to the ceiling or wall using the rail bolts, nuts and washers provided and the appropriate mounting brackets. Two mounting styles are available.

Bracket Attachment Diagram



Rails are mounted by inserting the 1/2" x 1-1/2" rail bolts into the slots on the top of the rail. Bolts can slide to any position on the rail.



Brackets are attached using the washers and nuts provided.

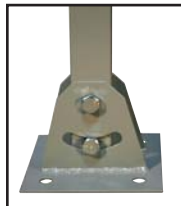
Universal Ceiling Brackets

The EuroVent Universal Ceiling Bracket is designed to provide both flexibility and maximum savings in installation time and labor costs. These products are much more affordable than conventional Unistrut products, but are just as versatile. Brackets can be easily "customized" on the job.

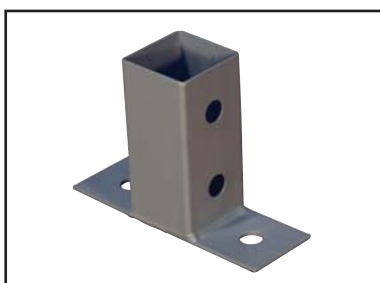
Adjustable Ceiling Bracket No. CB-CMA



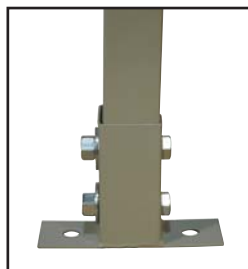
This allows for mounting on angles up to 30°. Simply clamp or bolt the bracket to any surface and secure the Mounting Tube. 6" x 6" mounting plate.



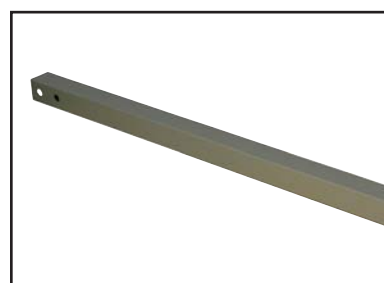
Rail Mount Ceiling Bracket No. CB-RM



Designed for use with the "rail bolts" provided. Mounts directly to the top of the EuroVent Rail. 6" x 2" mounting plate.



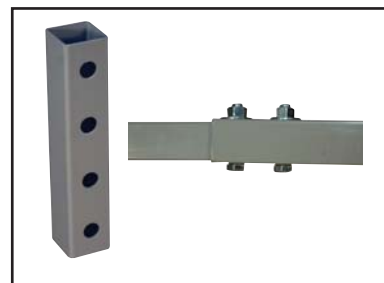
60" Straight Mounting Tube No. CB-T60



This 5' square tube has mounting holes at both ends. Can be cut to length or extended for longer applications.

Mounting Tube Connector No. CB-TC

Makes extending the Mounting Tube quick & easy.

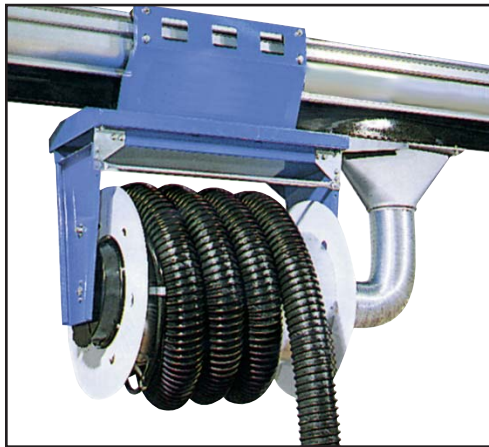
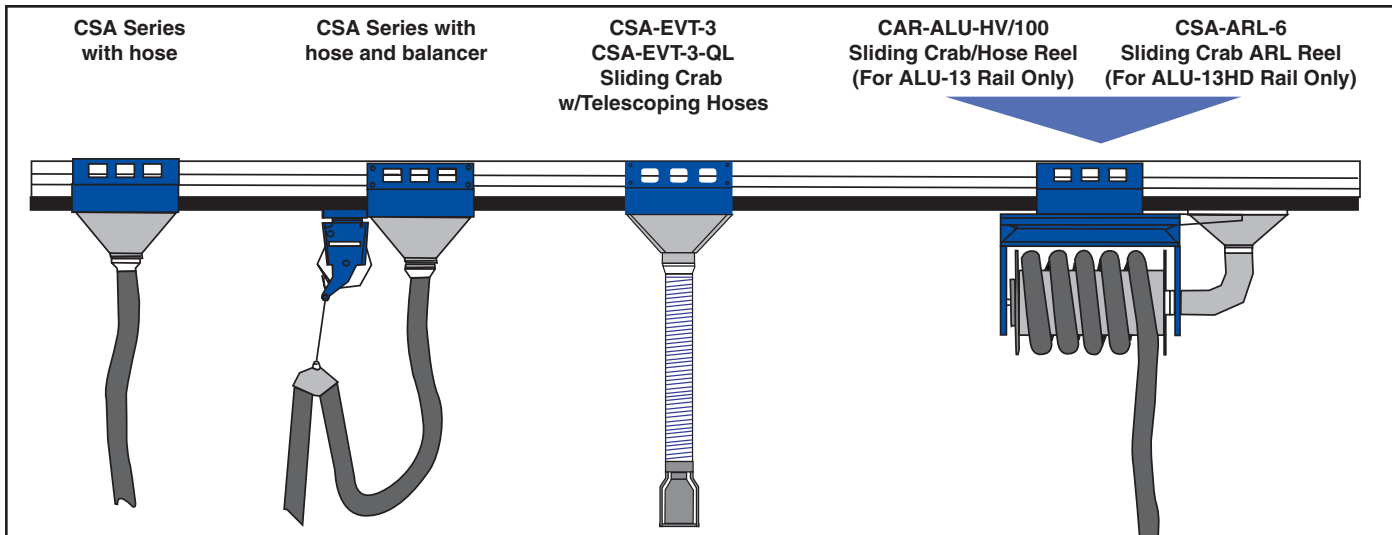


Wall Mount "L" Bracket No. SAD-ALU-80

For mounting rail to a wall or column. Bracket is 16" x 32".

Sliding Crabs & Accessories

Sliding crabs eliminate the need for overhead drops at every service bay. They are easily positioned wherever needed. Four wheels on top of the crab carry the load while the bottom wheels guide the crab. Four options to choose from:



“High-Volume” Sliding Crab Hose Reel

- The popular choice for most exhaust system designs.
- Combines the features of the CSA sliding crab with a retractable hose reel.
- Hose retracts up and out of the way when not in use.
- Includes 25' exhaust hose, hose stop and pull handle.
- Available in OE colors upon request.

Automotive - 4"
No. CAR-ALU-HV-100

HD Truck - 6"
No. CSA-ARL-6



Sliding Ventilation Crab

For use with ALU-13 and ALU-13HD rail. Easily mounts on rail.
Available for 3", 4" and 6" dia. hose. Hose not included.
Hose Balancer/Torque Reels available.

Automotive - 3"
No. CSA-170-75

Automotive - 4"
No. CSA-170-100

HD Truck - 6"
No. CSA-230-150



Sliding Crab w/Telescoping Hoses

- Benefits of a sliding crab with the flexibility of the telescoping hoses.
- 3-piece telescoping hose - 3".
- Complete with hose and universal tailpipe adapter.
- Innovative break-away design for added protection.
- Available with QuickLink™ Adapters.

Automotive
No. CSA-EVT-3

Automotive
No. CSA-EVT-3-QL

Exhaust Hose

- Lightweight crushproof hose is designed specifically for the EuroVent system.
- Withstands temperatures up to 1200°F.
- Resists abrasion and weathering.
- For use with reels and sliding crabs.
- Available in 25' lengths in 3", 4", 6" and 8" diameters.



Part No.	Hose Dia.	Hose Lgth.	Temp
EH350-325	3"	25'	350°
EH350-350	3"	50'	350°
EH425-350	4"	25'	350°
EH425-600	4"	25'	600°
EH625-600	6"	25'	600°
EH825-600	8"	25'	600°
EH825-1200	8"	25'	1200°

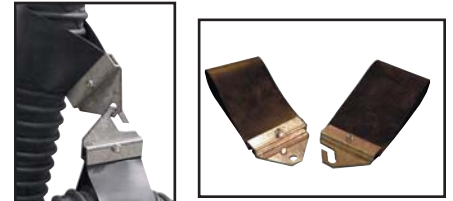
ATS Series Hose Supports

Hose supports are used with CSA series sliding crabs when hose balancer is not used. Supports are positioned on hose to keep it up off of the floor when not in use. Each support comes in two parts - one hook and one hanger. Available in 3", 4" and 6" hoses.

Automotive - 3"
No. ATS-75

Automotive - 4"
No. ATS-100

HD Truck - 6"
No. ATS-150



Hose Stop

Available in three sizes.

For 3" Hose
No. FT75

For 4" Hose
No. FT100

For 6" Hose
No. FT150



Hose Balancer/Torque Reel

For use with all CSA series sliding crabs. Balancer mounts to sliding crab. Balancer retracts hose and keeps it off of the floor when not in use.

3" Hose
No. TQ-1515

4" Hose / 6" Hose
No. BG-25L



Tailpipe Adapters

EuroVent
QuickLink™

Universal Tailpipe Adapters

Finding and using the right tailpipe adapter to fit the variety of cars and light trucks that pull into your service bays can be difficult.

With dual exhaust systems and recessed and flush mount tailpipes it can be virtually impossible.

Even if the correct adapter is available, connecting and disconnecting from the exhaust hose can be difficult and time consuming.



How QuickLink™ Universal Tailpipe Adapter System Works

A QuickLink™ receiver is installed on each exhaust hose of the extraction system. Each tailpipe adapter is equipped with a QuickLink™ connector.



1. Align pins on the tailpipe adapter to the slots on the receiver.



2. Push pins in the slots.



3. Turn so pins drop and lock into place.

The new EuroVent® QuickLink™ Universal Tailpipe System solves your exhaust problems so that connecting adapters is quick and easy:

- Tailpipe adapters can be connected and disconnected in seconds
- No removing clamps or unscrewing adapters from the hose
- Flexible rubber adapters fit most tailpipe configurations. High-temp silicone adapters are also available.
- Special Y-Hose is designed for dual exhaust applications
- Free-standing floor nozzle works with hard-to-reach and flush mount tailpipes
- Adapters are accessible and organized using the custom nozzle rack
- Fits all systems using 4" diameter exhaust hose and standard 3" Crushproof hose when QC-3CP is used.
- Technicians are more encouraged to use the exhaust extraction system
- The service area is a much safer work environment
- Productivity is increased



Universal Tailpipe Adapter Components

Universal Tailpipe Adapters

High-quality adapters are flexible and can be formed to fit most tailpipe configurations including oval and dual oval designs. Available in rubber and hi-temp silicone.



Part No.	Dia. A	Dia. B	Type
QCN-2040	4"	6"	Rubber
QCN-2041	4"	8"	Rubber
QCN-2041S	4"	8"	Silicone
QCN-6782S	4"	6"	Silicone

4" Receiver with Damper Control

No. QC-4D



Fits 4" exhaust hose and is designed to accept all 4" QuickLink™ Tailpipe Adapters. Damper control restricts air flow to prevent excessive air loss when not in use.

4" Y-Hose Assembly

No. QCY-4



Designed for dual exhaust systems - the QCY-4 uses the same Quick-Link™ connectors used on the tailpipe adapters. Makes using a Y-Hose setup simple

QuickLink™ Organizer Rack*

No. QCR-1452



*Adapters and Y-Hose sold separately

Finding the right tailpipe adapter has never been easier with the QuickLink™ Organizer Rack.

This spacesaving racks mounts easily and holds all the sizes of QuickLink™ Universal Tailpipe Adapters you need to do your job safely. You'll never have to remove clamps or unscrew adapters from hoses again.

It just takes seconds to find the size and type of adapter you need from the QuickLink™ Organizer Rack, connect it in to place, and your're ready to go.

- Rack allows for easy storage and access for up to 8 QuickLink™ Universal Tailpipe Adapters and 1 Y-Hose Assembly.
- Rack measures 14" wide x 52" tall, assembled.
- Rack can easily be mounted to any wall, support beam, column or post.

Portable Tailpipe Adapter Stand

No. QCS-2041



For use with recessed, flush mount or hard-to-reach tailpipe designs. The stand is equipped with a QCN-2041 tailpipe adapter and is adjustable for both height and angle.

To Use:

- Place stand in front and as close to the tailpipe as possible.
- Attach the exhaust hose or Y-Hose.
- Adjust height and angle as required.



3" Crushproof Receiver

No. QC-3CP



Fits standard 3" Crushproof hose, FLT300. Adapts to allow the use of any 4" QuickLink™ adapter, Y-hose or Stand.

Tailpipe Adapters

Stainless Steel Adapter

For use on high-temperature applications. Vice-grip makes for a secure tailpipe connection.



No. SS-3-VG For 3" Hose
 No. SS-4-VG For 4" Hose
 No. SS-6-VG For 6" Hose
 No. SS-8-VG For 8" Hose

NOTE: Tailpipe adapter style may vary slightly from picture.

Ford Super-Duty Adapter

For use on Ford Super-Duty and other high-temperature applications.



No. FSDA-3 For 3" Hose
 No. FSDA-4 For 4" Hose
 No. FSDA-6 For 6" Hose

Tailpipe Adapters

This rubber tailpipe adapter connects directly to the tailpipes of a variety of vehicles. A metal damper inside the adapter closes when not in use to reduce air loss. A locking clamp is used to secure the adapter to the vehicle.



Replacement Rubber Cap

No. BGT160-CAP

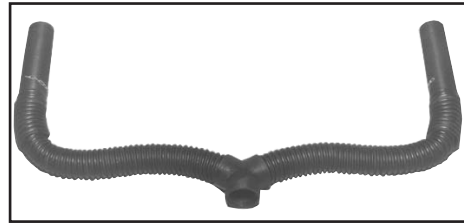
• For BGT-160.



Crushproof Tubing Tailpipe Adapters & Hose



No. JDH-250 2.5" x 11' Exhaust Hose
 No. JDH-300 3" x 11' Exhaust Hose
 No. JDH-400 4" x 11' Exhaust Hose



No. JDY-303 3" Y-Hose
 No. JDY-404 4" Y-Hose
 No. JDY-606 6" Y-Hose



Splice Connector
 No. SP30



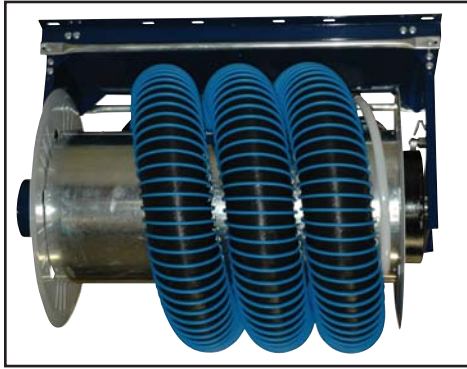
No. F475 2" Twin Oval
 No. F575 3" Twin Oval



Door Port
 No. JDP-302
 No. JDP-303



No. F250 2-1/2" Adapter
 No. F350 3" Adapter



ARL Series Hose Reels

- Mechanical spring recoil reel.
- Designed specifically for automotive exhaust extraction.
- Reels can be mounted on wall, beam or ceiling.
- Enameled finish.
- Available with 3" or 6" hose.
- Includes duct connection flange and hose stop.

Automotive 3"
3" Dia. Hose x 50'
 No. CAR-ALU-HD-3

Automotive 4"
4" Dia. Hose x 25'
 No. CAR-ALU-HD-4

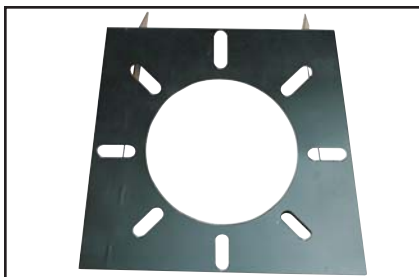
HD Truck 6"
6" Dia. Hose x 25'
 No. CAR-ALU-HD-6



ARL Reel and Fan Combination

- ARL reels can be coupled with fans to make a self-contained exhaust extraction system.
- Ideal for single bay applications where a rail system is not practical.
- Fan is mounted using No. FAR-10 Fan/Reel Mounting Coupler.
- Includes hose stop.

Fixed Hose Reels (Only)*			
Hose Reel	Hose Dia.	Hose Lgth.	
CAR-ALU-HD-3	3"	50'	
CAR-ALU-HD-4	4"	25'	
CAR-ALU-HD-6	6"	25'	
*Tailpipe adapters sold seperately			
Fixed Hose Reels & Fan Combination**			
Hose Reel	Hose Dia.	CFM (Max)	Fan / HP
CAR-ALU-HD-3	3"	150	1.0
CAR-ALU-HD-4	4"	300	1.0
CAR-ALU-HD-6	6"	750	1.0
**AF15 Exhaust fan required, sold seperately			
**FAR-10, Fan/Reel flange required, sold seperately			
**Tailpipe adapters sold seperately			



Fan/Reel Flange

Used to attach fans to CAR series hose reels.

No. FAR-10

Overhead Exhaust System

“Telescoping Type”

Affordable System Makes Installation Faster and Easier!



- **Professional Appearance**

Telescoping design eliminates winches, ropes and pulleys. Universal, clean look from bay-to-bay. Hoses are stored when not in use.

- **Quality**

Made in the U.S.A. 1-year warranty.

- **Affordability**

Most systems are more affordable than other professional options.

- **Safety**

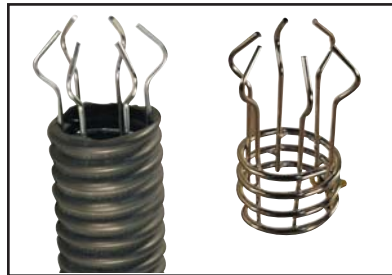
Innovative break-away design protects the vehicle being serviced, as well as the overhead exhaust system. Non-metallic tailpipe adapter protects the technician. No hoses left on the floor.

- **Durable**

Robust design produced of corrosion-resistant materials that should allow for years of trouble-free use.

- **Simple Installation**

The supplied duct saddle will adjust to various spiral duct sizes. System is shipped complete, ready to install.



- Break-away design reconnects easily.
- Requires no tools, ladders or high lifts.



- Universal 3" Crushproof hose and adapter.
- Adapter screws onto hose. No clamps required.



- QuickLink™ allows for fast and easy changes to various tailpipe adapters.

Each system comes complete with 5” Universal Adjustable Saddle, 3-Piece Telescoping Hose, Universal Oval Tailpipe Adapter and Swing Gate Assembly.

System:

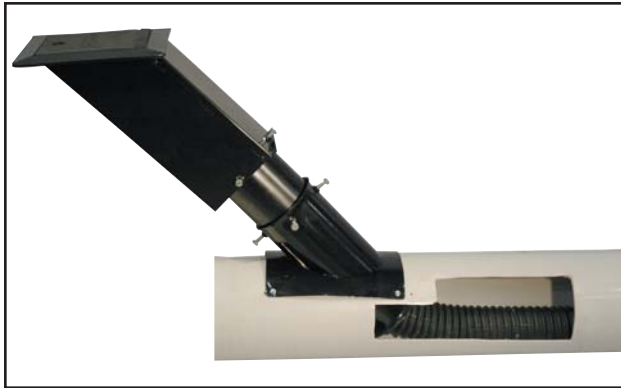
No. EVT-3

3" Complete Telescoping Exhaust System

No. EVT-3-QL

3" Complete Telescoping Exhaust System with QuickLink™ Tailpipe Adapter

“Saddle Style” Disappearing Underground Exhaust System



Three-Piece telescoping design provides up to 5" of adjustability, making installation easier and faster.

- Telescoping design makes final adjustments much easier.
- Makes exhaust duct depth less critical.
- Eliminates need for additional extension pieces.
- Flared connections allow the hose to slide smoothly.
- Oblong mounting holes on saddle allow for horizontal adjustment.

Three-Step Finishing Process for Superior Corrosion Protection.

- Phosphate base coat on all metal parts.
- Electro-coat primer penetrates all surfaces and seams.
- Powder-coat top coat provides a durable finish.



Patented Rubber Door Design

- 3mm internal steel plate is encapsulated in rubber.
- No moving parts.
- 180° opening.
- Corrosion- and oil-resistant.
- Easily replaceable.

Complete Underground Systems

Each system comes complete with 3-piece floor assembly, 8' Crushproof Exhaust Hose, Tailpipe Adapter and Hose Insertion Guide

Systems:

No. EVU-3
No. EVU-4

3" Complete Underground System (includes 3" x 8' Crushproof Hose)
4" Complete Underground System (includes 4" x 8' Crushproof Hose)

Components:

No. EVUD-1
No. EVCP-83
No. EVCP-84
No. EVIG-1
No. EV-350
No. EV-450

Replacement Door
3" x 8' Crushproof Hose
4" x 8' Crushproof Hose
Hose Insertion Guide
3" Tailpipe Adapter
4" Tailpipe Adapter



Fans & Fan Accessories

System requirements must be properly calculated in order to select the proper fan type and size. Failure to do so can result in poor system performance and/or premature fan wear. Please consult the factory representative for proper fan selection.

- All fans are American made
- U.L. Approved for indoor & outdoor applications
- Air and sound performance tested prior to shipment (AMCA-210-85 & 300-85)
- Rugged, lightweight and rustproof cast aluminum construction
- Direct drive models offer quiet operation and are maintenance free
- Belt drive models offer system performance flexibility
- Three phase motors are wired tri-voltage (208V/230V/460V)
- Single phase motors are wired dual voltage (120V/230V)

Fans and configuration or fans can vary depending on applications

Optional Accessories-Available Upon Request

- Inlet/Outlet Flex Connections
- Vibration Isolators
- Fan Mounting Base (Wall or Floor)



No. AF-15
Direct Drive

Part No.	Drive	CFM Range
AF-15	Direct Drive	0-1000
AF-15-BD	Belt Drive	0-1000
QBCS-122-DD	Direct Drive	1000-1800
QBCS-122	Belt Drive	1000-2000
QBCS-135-DD	Direct Drive	1800-2700
QBCS-135	Belt Drive	1800-2800
QBCS-150	Belt Drive	2300-3000
QBCS-165-DD	Direct Drive	2800-3500
QBCS-165	Belt Drive	2800-3700
QBCS-182	Belt Drive	3700-4800



No. QBCS
Belt Drive

Motor Starters

No. 5HP460V-3

No. 5HP460V-3-T (With Timer)



- Available Upon Request
- Manual or Magnetic Starters
- Combination Starters (Starters w/Disconnect)
- On/Off Push Button
- NEMA Type 1 Enclosure (STD)
- Other NEMA Enclosures are available
- Selector Switches
- Timers
- Disconnects

Fan Flex Connection

No. FAN-FLEX-8 8"
No. FAN-FLEX-10 10"
No. FAN-FLEX-12 12"



Reduces vibration from the fan to the ductwork.

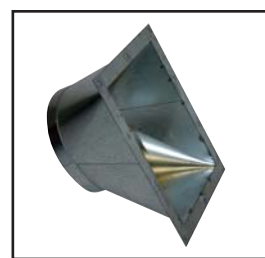
QBCS Series Fan Duct Transition Fitting

No. QBCS-IN Inlet

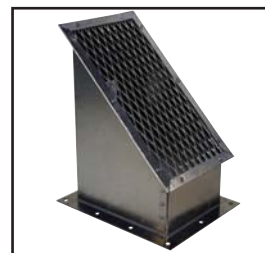


Duct fitting that transitions from the fan inlet diameter to the main duct diameter.

No. QBCS-OUT Outlet



Duct fitting that transitions from the rectangular fan outlet to the main duct diameter (for outdoor mounted fans, a 45° hood with birdscreen is provided).



Portable Exhaust Extraction System

Mobile, Adjustable, Adaptable and Cost-Effective

This easy-to-use portable exhaust extraction system is a practical and affordable solution for effectively removing toxic exhaust fumes from auto repair facilities, motorcycle shops, small engine repair shops and other work areas where toxic fume removal is needed.



Model No. EV-5100

- Positioned next to the vehicle, the high-output suction fan captures fumes and discharges them safely up to 30' away, using the hose provided.
- 3/4-hp fan produces 330 cfm air flow.
- Uses standard 110V current.
- Fan is mounted in tough, integrally molded polyethylene "flow thru" case.
- Mobile base makes the EV-5100 easy to position behind the vehicle or move around the shop.
- Height position is controlled by a quick-release spring-loaded cam lock.
- 5" discharge hose diameter for optimal exhaust flow.

JohnDow **EuroVent**[®]

Vehicle Exhaust Extraction

Approved by the Following Vehicle Manufacturers:



Jeep[®]



Mercedes-Benz

MITSUBISHI
MOTORS

SUBARU

TOYOTA

For Complete Details, Call Us Toll-Free @ 1-800-433-0708



Performance, Reliability, Commitment.

151 Snyder Ave. • Barberton, OH 44203
Toll-Free: 1-800-433-0708 • Fax: 330-753-6419
E-mail: customerservice@euroventexhaust.com
Web site: www.euroventexhaust.com