

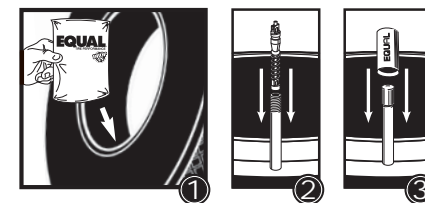


# Application Instructions and Quantity Chart

It is important to properly install EQUAL to achieve maximum results. Before installing EQUAL, read the application quantity chart and instructions. If you are not satisfied with this product call toll free in U.S. 1-800-233-7086, outside U.S. 1-717-264-5819, or email us at imi@imiproducts.net.

## Application for Unmounted Tires:

1. Apply bead lubricant conservatively on the bead area of the tire. If tire lube falls inside the tire, wipe clean. Be sure that wheel does not have a "sticky" residue. If so, wipe clean.
2. Simply drop bag in tire before mounting. Do not tear or open the bag.
3. Mount Tire on Wheel.
4. Insert AirX filtered valve core into the valve stem.
5. Inflate and adjust air pressure of tire.
6. Place yellow EQUAL ID sleeve on valve stem to indicate that EQUAL is inside the tire.
7. Always use metal sealing or flow-through cap on valve stem.



## Application for Mounted Tires:

1. Remove all lead weights.
2. Open and close the ball valve at the filler cap end of the Equalizer to release any pressure still contained in the chamber. Be sure both ball valves are closed before filling the Equalizer.
3. Remove fill cap by depressing the filler cap locking button and rotating the cap counter clockwise. Pour EQUAL into the open chamber, then replace fill cap by turning the cap clockwise until locking pin pops out. Both ball valves should still be closed.
4. Remove valve core and deflate tire to 30% of maximum recommended air pressure. Place Equalizer horizontally on the ground, making sure the surface is level and the product is level inside the cylinder. Attach Equalizer hose assembly to valve stem. Attach air supply line to the air supply connection of Equalizer and adjust air regulator so as not to exceed recommended tire air pressure.
5. Open the ball valve on the hose assembly connected to the tire. Then slowly open the valve at the air supply line, this creates a cyclone effect and carries EQUAL through the valve stem and into the tire. EQUAL clears the chamber in about 30 seconds- the tire is reinflated at the same time.
6. When installation is complete, close air supply ball valve and then hose assembly ball valve. Then remove hose from valve stem while holding the hose assembly away from yourself and anyone else. Open and close the ball valve at the filler cap to release any remaining pressure within the chamber.
7. Insert AirX Filtered Valve Core into the valve stem
8. Adjust air pressure of tire. Give one quick burst of air to clear EQUAL out of the valve stem before and after checking air pressure.
9. Place yellow EQUAL ID sleeve on valve stem to indicate that EQUAL is inside the tire.
10. Always use metal sealing or flow-through cap on valve stem.



**When lubricating beads, do not allow any lubricant into the tire. To prevent this, we recommend the use of Air-Lock Tire Lube & Bead Seal.**

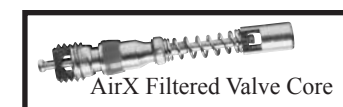
**NOTE: If not applied properly, tire lube may cause EQUAL to "ball" or "clump". EQUAL does not absorb or retain moisture/water. Moisture that accumulates within a tire will vaporize as the tire warms to 140 degrees Fahrenheit and will dissipate through the sidewalls of the tire as the pressure inside the tire is greater than the atmospheric pressure outside the tire. Tire lube will not evaporate, so we recommended the use of Air-Lock Tire Lube & Bead Seal, or a conservative (bead only) application of tire lubricant. Excessive tire lube, thick, concentrate tire lube and paste-like tire lubes dropped into the tire may cause EQUAL to "ball up" or "clump".**

**Inflate tires with moisture free air. Use the AirX Filtered Valve Core or valve stem filter extension. Always use a metal sealing valve stem cap. IMI DISCLAIMS ANY RESPONSIBILITY FOR AIR LOSS OR THE DAMAGE DUE TO AIR LOSS IF A SELF-SEALING CAP IS NOT INSTALLED AFTER INSTALLING EQUAL OR CHECKING AIR PRESSURE.**

**Do not install EQUAL in tires filled with water or tires filled with sealants.**

**Product color may vary. Contents are nontoxic, environmentally safe, and nonflammable.**

**Refer to the EQUAL Service Guide for complete information regarding diagnosing vibrations.**



## LIGHT TRUCK MUDDER APPLICATION CHART

There are a number of variables that contribute to vibration in "mudder" tires. Before installing EQUAL, please check the following:

-Proper drive line angle -Tire pressure -Lift kit -Run-out of tires -Run-out of wheels -Extreme side wall flex -Tread ripple -Lug pattern that may cause an acoustical vibration  
-These factors will play a role in the vibration of the vehicle and EQUAL will not correct these conditions. We provide a start quantity and a quantity range\* for the following tire sizes based upon our field testing. However, we cannot guarantee the elimination of vibration in all cases due to the previously mentioned variables.

Tire	Wheel	Start	Range
33X10.50	15	3.0z.	3-4.0z.
33X11.50	15	3.0z.	3-4.0z.
33X12.50	15	3.0z.	3-4.0z.
33X12.50	15	3.0z.	3-4.0z.
33X14	15	3.0z.	3-4.0z.
33X14.5	15	4.0z.	4-6.0z.
33X15.5	15	3.0z.	3-4.0z.
34X9.5	15	3.0z.	3-4.0z.
34X12.5	15	3.0z.	3-4.0z.
35X12.5	15	4.0z.	4-6.0z.
35X14.5	15	4.0z.	4-6.0z.
35X15	15	4.0z.	4-6.0z.
35X16	15	4.0z.	4-6.0z.
36X14.5	15	6.0z.	6-8.0z.
36X15.5	15	6.0z.	6-8.0z.
36X16.5	15	6.0z.	6-8.0z.
37X12.5	15	6.0z.	6-8.0z.
38X12.5	15	6.0z.	6-8.0z.
38.5X11	15	6.0z.	6-8.0z.
38.5X15.5	15	6.0z.	6-8.0z.
38.5X16	15	6.0z.	6-8.0z.
38.5X16.5	15	6.0z.	6-8.0z.
39X15	15	6.0z.	6-8.0z.
39.5X15	15	6.0z.	6-8.0z.
39.5X18	15	6.0z.	6-8.0z.
40X17	15	8.0z.	8-10.0z.
42X15	15	8.0z.	8-10.0z.
44X18.5	15	8.0z.	8-10.0z.
44X19.5	15	8.0z.	8-10.0z.
44X21	15	8.0z.	8-10.0z.
Q78	15	4.0z.	4-6.0z.
33X11.50	16	3.0z.	3-4.0z.
33X12.5	16	3.0z.	3-4.0z.
33X13	16	3.0z.	3-4.0z.

Tire	Wheel	Start	Range
33X13	16	4.0z.	4-6.0z.
33X13.50	16	4.0z.	4-6.0z.
34X9	16	3.0z.	3-4.0z.
34X12.5	16	3.0z.	3-4.0z.
35X12.50	16	4.0z.	4-6.0z.
35X14.50	16	4.0z.	4-6.0z.
36X13	16	6.0z.	6-8.0z.
36X14	16	6.0z.	6-8.0z.
36X14.50	16	4.0z.	4-6.0z.
38X15.50	16	6.0z.	6-8.0z.
38.5X11.00	16	6.0z.	6-8.0z.
38.5X14.5	16	6.0z.	6-8.0z.
39.5X15	16	6.0z.	6-8.0z.
40X14.5	16	8.0z.	8-10.0z.
42X15	16	6.0z.	6-8.0z.
44X21	16	8.0z.	8-10.0z.
255/85	16	3.0z.	3.0z.
325/80	16	4.0z.	4-6.0z.
33X12.50	16.5	3.0z.	3-4.0z.
33X14.00	16.5	3.0z.	3-4.0z.
33X15.50	16.5	3.0z.	3-4.0z.
34X9.50	16.5	3.0z.	3-4.0z.
35X12.5	16.5	4.0z.	4-6.0z.
35X14.50	16.5	4.0z.	4-6.0z.
35X15	16.5	4.0z.	4-6.0z.
35X16	16.5	4.0z.	4-6.0z.
36X12.50	16.5	6.0z.	6-8.0z.
36X14.50	16.5	4.0z.	4-6.0z.
37X12.50	16.5	6.0z.	6-8.0z.
38X12.50	16.5	6.0z.	6-8.0z.
38X15.50	16.5	6.0z.	6-8.0z.
38.5X15	16.5	6.0z.	6-8.0z.
38.5X16	16.5	6.0z.	6-8.0z.
39.5X15	16.5	6.0z.	6-8.0z.

Tire	Wheel	Start	Range
39.5X18	16.5	6.0z.	6-8.0z.
42X15	16.5	8.0z.	8-10.0z.
44X18.5	16.5	8.0z.	8-10.0z.
44X19.5	16.5	8.0z.	8-10.0z.
49X21	16.5	10.0z.	10-12.0z.
33X12.5	17	4.0z.	4-6.0z.
35X12.5	17	4.0z.	4-6.0z.
37X12.50	17	4.0z.	4-6.0z.
38X15.50	17	6.0z.	6-8.0z.
38.5X14.50	17	6.0z.	6-8.0z.
39.5X15	17	6.0z.	6-8.0z.
42X15	17	8.0z.	8-10.0z.
44X21	17	8.0z.	8-10.0z.
33X12.50	18	4.0z.	4-6.0z.
35X12.50	18	4.0z.	4-6.0z.
37X13.5	18	6.0z.	6-8.0z.
38X15.50	18	6.0z.	6-8.0z.
38.5X14.50	18	4.0z.	4-6.0z.
33X12.50	20	4.0z.	4-6.0z.
35X12.50	20	4.0z.	4-6.0z.
38.5X14.50	20	4.0z.	4-6.0z.
39.5X15	20	6.0z.	6-8.0z.
44X21	20	8.0z.	8-10.0z.
38X15.50	20	6.0z.	6-8.0z.
39.5X15	20	6.0z.	6-8.0z.
35X12.50	22	4.0z.	4-6.0z.

\*1 oz. packages are available to obtain the correct quantity range.



# COMMERCIAL TIRE APPLICATION CHART

## Truck Tires

Tire Size		Wheel Position	
		Single	Dual
7.50	R18	C-8 oz.	C-8 oz.
8.00	R19.5	D-6 oz.	C-8 oz.
9.00	R19.5	D-6 oz.	C-8 oz.
18.00	R19.5	B+E = 14 oz.	
225/70	R19.5	D-6 oz.	C-8 oz.
245/70	R19.5	D-6 oz.	C-8 oz.
265/70	R19.5	D-6 oz.	C-8 oz.
275/70	R19.5	C-8 oz.	B-10 oz.
285/70	R19.5	C-8 oz.	B-10 oz.
295/70	R19.5	C-8 oz.	B-10 oz.
305/70	R19.5	B-10 oz.	A-12 oz.
280/75	R19.5	C-8 oz.	B-10 oz.
445/65	R19.5	B+E = 14 oz.	
525/65	R20.5	B+C = 18 oz.	
615/65	R20.5	B+B = 20 oz.	
7.50	R20	C-8 oz.	B-10 oz.
8.25	R20	C-8 oz.	B-10 oz.
9.00	R20	B-10 oz.	A-12 oz.
10.00	R20	B-10 oz.	A-12 oz.
11.00	R20	A-12 oz.	B+E = 14 oz.
12.00	R20	A-12 oz.	A-12 oz.
12.50	R20	A-12 oz.	B+E = 14 oz.
13/80	R20	A-12 oz.	B+E = 14 oz.
14/80	R20	A-12 oz.	B+E = 14 oz.
14.00	R20	C+C = 16 oz.	C+C = 16 oz.
16.00	R20	B+B = 20 oz.	
10.00	R22	A-12 oz.	B+E = 14 oz.
11.00	R22	A-12 oz.	B+E = 14 oz.
9.00	R22.5	C-8 oz.	B-10 oz.
10.00	R22.5	C-8 oz.	B-10 oz.
11.00	R22.5	B-10 oz.	A-12 oz.
12.00	R22.5	A-12 oz.	B+E = 14 oz.
275/50	R22.5	B-10 oz.	A-12 oz.
235/70	R22.5	D-6 oz.	C-8 oz.
255/70	R22.5	C-8 oz.	B-10 oz.
11/70	R22.5	B-10 oz.	A-12 oz.
265/70	R22.5	C-8 oz.	B-10 oz.
295/60	R22.5	B-10 oz.	A-12 oz.

Tire Size		Wheel Position	
		Single	Dual
275/70	R22.5	B-10 oz.	A-12 oz.
305/70	R22.5	B-10 oz.	A-12 oz.
365/70	R22.5	A-12 oz.	
315/70	R22.5	B-10 oz.	A-12 oz.
245/75	R22.5	C-8 oz.	B-10 oz.
265/75	R22.5	C-8 oz.	B-10 oz.
285/75	R22.5	B-10 oz.	A-12 oz.
295/75	R22.5	B-10 oz.	A-12 oz.
315/75	R22.5	B-10 oz.	
345/75	R22.5	A-12 oz.	
350/75	R22.5	B+E = 14 oz.	
235/80	R22.5	D-6 oz.	C-8 oz.
255/80	R22.5	C-8 oz.	B-10 oz.
275/80	R22.5	B-10 oz.	A-12 oz.
295/80	R22.5	A-12 oz.	B+E = 14 oz.
305/85	R22.5	A-12 oz.	B+E = 14 oz.
315/80	R22.5	A-12 oz.	
365/80	R22.5	A-12 oz.	
445/50	R22.5	A-12 oz.	
455/50	R22.5	A-12 oz.	
385/65	R22.5	C+C = 16 oz.	
425/65	R22.5	B+E = 14 oz.	
435/45	R22.5	A-12 oz.	
445/55	R22.5	A-12 oz.	
445/65	R22.5	C+C = 16 oz.	
495/45	R22.5	B+E = 14 oz.	
15.00	R22.5	A-12 oz.	
16.50	R22.5	B+E = 14 oz.	
18.00	R22.5	C+C = 16 oz.	
11.00	R24	A-12 oz.	B+E = 14 oz.
12.00	R24	B+E = 14 oz.	
14.00	R24	C+C = 16 oz.	
285/75	R24.5	B-10 oz.	A-12 oz.
305/75	R24.5	B-10 oz.	A-12 oz.
315/75	R24.5	B-10 oz.	A-12 oz.
275/80	R24.5	B-10 oz.	A-12 oz.
295/80	R24.5	B-10 oz.	A-12 oz.
11.00	R24.5	B-10 oz.	A-12 oz.
12.00	R24.5	B+E = 14 oz.	B+E = 14 oz.

## Commercial Light Truck Tires

The following tire sizes apply only to light truck tires (must be LT rated) for commercial vehicles with dual wheel positions or a load capacity of 2,000 lbs. or more. For passenger rated tires we recommend the use of XACT Balance. For light truck tires available in a heavy duty ply/load rating (10+), use the next EQUAL package size up (additional 2 oz). Example: A 215/75 R 17.5 light truck tire requires a D package (6 oz.) for normal application. For heavy duty rated tires a C package (8 oz.) is recommended.

Tire Size		Wheel Position	
		Single	Dual
195/70	R15	F-3 oz.	F-3 oz.
195/65	R16	F-3 oz.	F-3 oz.
305/70	R16	E-4 oz.	E-4 oz.
225/75	R16	F-3 oz.	F-3 oz.
245/75	R16	F-3 oz.	F-3 oz.
265/75	R16	F-3 oz.	F-3 oz.
285/75	R16	F-3 oz.	F-3 oz.
295/75	R16	E-4 oz.	E-4 oz.
315/75	R16	E-4 oz.	E-4 oz.
215/85	R16	F-3 oz.	F-3 oz.
225/85	R16	F-3 oz.	F-3 oz.
235/85	R16	F-3 oz.	F-3 oz.
245/85	R16	F-3 oz.	F-3 oz.
255/85	R16	E-4 oz.	E-4 oz.
265/85	R16	E-4 oz.	E-4 oz.
305/85	R16	E-4 oz.	E-4 oz.
7.50	R16	F-3 oz.	F-3 oz.
8.25	R16	D-6 oz.	D-6 oz.
11.00	R16	B-10 oz.	B-10 oz.
8.00	R16.5	F-3 oz.	F-3 oz.
8.75	R16.5	F-3 oz.	F-3 oz.
9.5	R16.5	F-3 oz.	F-3 oz.
245/75	R17	F-3 oz.	F-3 oz.
265/70	R17	F-3 oz.	F-3 oz.

Tire Size		Wheel Position	
		Single	Dual
235/80	R17	E-4 oz.	E-4 oz.
315/70	R17	E-4 oz.	E-4 oz.
315/70	R17.5	E-4 oz.	E-4 oz.
195/60	R17.5	E-4 oz.	E-4 oz.
205/60	R17.5	E-4 oz.	E-4 oz.
225/60	R17.5	E-4 oz.	E-4 oz.
8.00	R17.5	E-4 oz.	E-4 oz.
8.50	R17.5	D-6 oz.	D-6 oz.
9.00	R17.5	D-6 oz.	D-6 oz.
10.00	R17.5	C-8 oz.	C-8 oz.
11.00	R17.5	C-8 oz.	C-8 oz.
14.00	R17.5	C-8 oz.	C-8 oz.
195/70	R17.5	E-4 oz.	E-4 oz.
215/70	R17.5	E-4 oz.	E-4 oz.
235/70	R17.5	E-4 oz.	E-4 oz.
205/75	R17.5	E-4 oz.	E-4 oz.
215/75	R17.5	D-6 oz.	D-6 oz.
225/75	R17.5	D-6 oz.	D-6 oz.
235/75	R17.5	D-6 oz.	D-6 oz.
205/80	R17.5	E-4 oz.	E-4 oz.
225/80	R17.5	E-4 oz.	E-4 oz.
225/90	R17.5	D-6 oz.	D-6 oz.
245/70	R18	E-4 oz.	E-4 oz.
275/65	R18	F-3 oz.	F-3 oz.

### Ag Tires

14 x 14 x 20	B+B = 20 oz.
42 x 12 x 20	B+B = 20 oz.
42 x 25 x 20	A+A = 24 oz.
44 x 41 x 20	B+B+A = 32 oz.
48 x 25 x 20	B+B+B = 30 oz.
48 x 31 x 20	B+B+A = 32 oz.
66 X 43 x 25	4B's+A = 52 oz.

### Crane Tires

14.0 x 24	B+B = 20 oz.
20.5 x 25	B+B+B = 30 oz.
17.5 x 24	A+B+B = 32 oz.
17.5 x 45	A+A = 24 oz.



The EQUAL Smooth Ride Guarantee provides a full refund of the product purchase price if the application does not result in a smooth ride. EQUAL Tire Performance must be installed according to manufacturer's recommendations. This Guarantee extends to tire and wheel assemblies which are within manufacturer's specifications for radial and lateral runout and vehicles which are within accepted manufacturer's mechanical tolerances. If not fully satisfied, contact IMI at 1-800-233-7086 or www.imiproducts.com. \*The EQUAL Smooth Ride Guarantee does not apply to EQUAL quantities for tire sizes not on the chart, or to mudder tire quantities.

In case of truck or trailer tire/wheel rotation; i.e. drive axle to steer axle, the use of single wheel EQUAL quantity is recommended. The installation of two Drop In bags in one tire is for super single tires only.

**Please contact IMI regarding Equal quantities for tire sizes not listed. 1-800-233-7086**