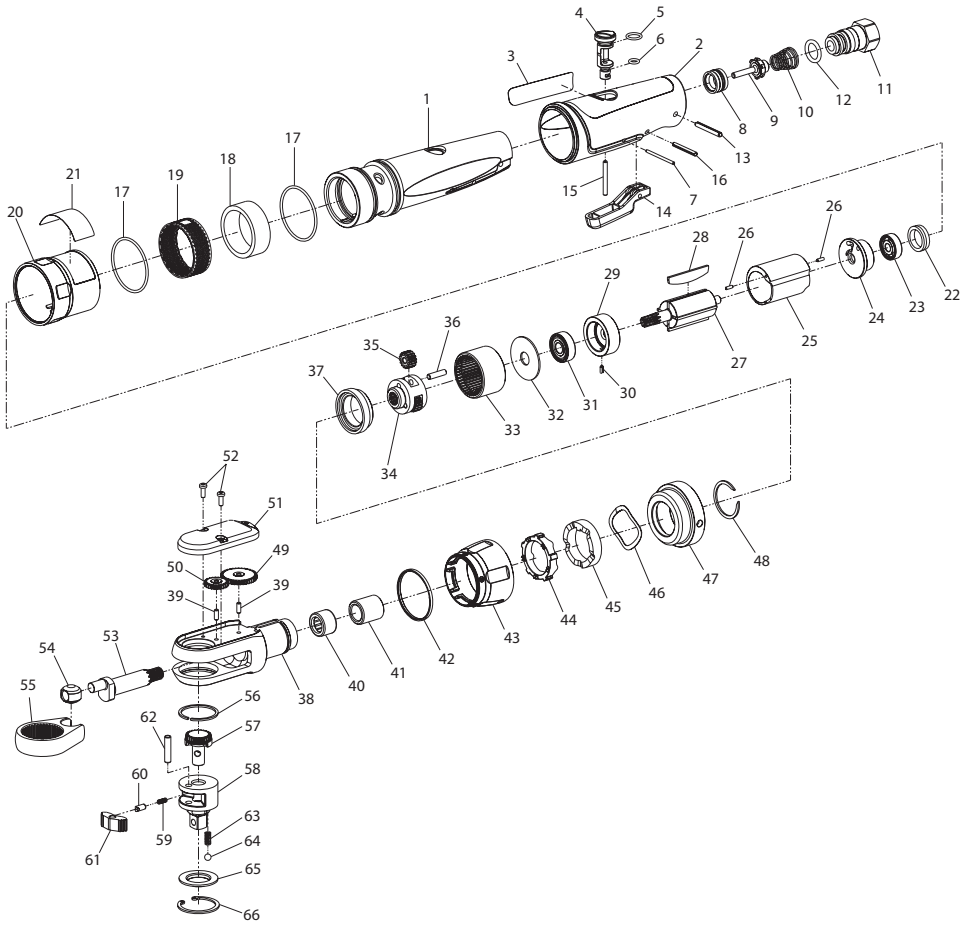


1207MAX Series Air Ratchet Wrench - Exploded View



(Dwg. 45653425)

1207MAX Series Air Ratchet Wrench - Parts List

Item	Part Description	Part Number	Item	Part Description	Part Number
	Housing Assembly			Ratchet Housing Assembly	1207-A322
	for 1207MAX-D3	1207MAX-D3-A40	38	Ratchet Housing	---
	for 1207MAX-D4	1207MAX-D4-A40	39	Gear Pins (2)	---
1	Housing	---	40	Crankshaft Needle Bearing	---
	Composite Housing Assembly		41	Crankshaft Bushing	---
	for 1207MAX-D3	1207MAX-D3-A747	42	Reversing Collar Kit	1207-K127
	for 1207MAX-D4	1207MAX-D4-A747	43	Ring	---
2	Composite Housing	---	43	Collar	---
3	Nameplate Label	---	44	Indexer	---
	for 1207MAX-D3	1207MAX-D3-301	45	Cam	---
	for 1207MAX-D4	1207MAX-D4-301	46	Spring	---
	Valve Kit	1207-VK	47	Coupling Nut	1207-27
4	Power Regulator	---	48	Retaining Ring	1207-118
5	Regulator O-Ring (top)	---		Reversing Gear Kit	1207-K82
6	Regulator O-Ring (bottom)	---	49	Gear (large)	---
7	Regulator Retaining Pin	---	50	Gear (small)	---
8	Throttle Valve Seat	---	51	Cover	---
9	Throttle Valve	---	52	Screw (2)	---
10	Throttle Valve Spring	---	53	Crankshaft	1207-35
	Inlet Bushing Assembly	1207-A565	54	Drive Bushing	170-36
11	Inlet Bushing	---	55	Yoke	1207-37
12	Inlet Bushing O-Ring	---		Ratchet Head Kit	
13	Inlet Bushing Retaining Pin	---		for 1207MAX-D3	1207-D3-TRK1
	Throttle Lever Kit	1207-LK		for 1207MAX-D4	1207-D4-TRK1
14	Throttle Lever	---	56	Friction Ring	109XPA-427
15	Throttle Plunger	---	57	Reverse Button	1207-38
16	Throttle Lever Retaining Pin	---	58	Anvil Assembly	
17	Housing O-Ring	107XPA-367		for 1207MAX-D3	109XPA-D44
	Muffler Kit	1207-K311		for 1207MAX-D4	1099XPA-D44
18	Muffler	---		Pawl Kit	109XPA-K43
19	Muffler Screen	---	59	Lock Spring	---
	Exhaust Deflector Assembly	1207-A123	60	Lock Pin	---
20	Exhaust Deflector	---	61	Pawl	---
21	Warning Label	WARNING-34-99	62	Pawl Retaining Pin	---
	Motor Assembly	1207-MK		Spring Kit	109XPA-SK
22	End Cap	---	63	Friction Spring (3 per kit)	---
23	Rear Rotor Bearing	---	64	Friction Ball (3 per kit)	---
24	Rear End Plate	---	65	Thrust Washer	---
25	Cylinder	---	66	Retaining Ring	---
26	Motor Alignment Pins (2)	---		Oil - Ingersoll Rand No. 10 (4 oz. bottle)	10Z4
27	Rotor	---		* Grease	
28	Vanes (set of 4)	170-42-4		IR # 67 (1 lb can) - for Gearing	67-1 LB
29	Front End Plate	---		IR # 67 (8 lb can) - for Gearing	67 8 LB
30	Motor Alignment Pin	---		IR # 70 (1 lb can) - for Ratchet Head	70 1 LB
31	Front Rotor Bearing	---		IR # 70 (8 lb can) - for Ratchet Head	70 8 LB
32	Spacer	---		* Spline Wrench (for removal of item 33)	170-SW
	Gearing Kit	1207-GK		* Coupling Nut Wrench (for removal of item 47)	1105-CW
33	Internal Gear	---		* Handle Clamp Tool	1207-598
34	Spindle	---			
35	Planet Gear (3 per kit)	---			
36	Planet Gear Pin (3 per kit)	---			
37	Spacer	1207-80			

* Not Illustrated.

Parts and Maintenance

When the life of the tool has expired, it is recommended that the tool be disassembled, degreased and parts be separated by material so that they can be recycled.

Tool repair and maintenance should only be carried out by an authorized Service Center.

Refer all communications to the nearest **Ingersoll Rand** Office or Distributor.

Related Documentation

For additional information refer to:

Air Ratchet Wrench Safety Information Manual 04580361

Air Ratchet Wrench Product Information Manual 45657244.

Manuals can be downloaded from www.ingersollrandproducts.com.



www.ingersollrandproducts.com
© 2010 **Ingersoll Rand** Company

45657269
Edition 1
January 2010