

TIRESEAL QUANTITIES

SMOOTH COMPACTOR AND ROLLER TIRES

SIZE		PINTS
750	- 15	3
1000	- 15	5
750	- 16	3
825	- 20	4
900	- 20	6
1100	- 20	7
1300	- 24	8
1400	- 24	9
16.9	- 30	15

FLOTATION TIRES SAND RIB AND EARTH MOVING/FREE ROLLING TIRES

SIZE		PINTS
900	- 13	4
900	- 15	5
900	- 16	5
10.50	- 16	6
1100	- 16	6
1100	- 18	7
1100	- 20	7
1400	- 20	9
1600	- 20	10
24	- 20	14
24	- 21	14
27.25	- 21	17
1600	- 24	16
1800	- 24	17
21	- 24	20
1600	- 25	13
1800	- 25	16
29.5	- 25	26
2400	- 29	22

GRADER AND LOADER TIRE

SIZE		PINTS
700	- 20	4
750	- 20	4
825	- 20	5
1300	- 20	8
1400	- 20	10
1600	- 24	11
900	- 24	6
1000	- 24	7
1200	- 24	8
1300	- 24	9
1400	- 24	11
1600	- 24	13
750	- 25	5
1800	- 26	16
1400	- 28	12
1300	- 32	12
1400	- 32	13

OFF THE ROAD

DIRT TRACTION LOADER AND DOZER TIRE

SIZE		PINTS
2100	- 24	20
15.5	- 25	13
1800	- 25	16
20.5	- 25	15
23.5	- 25	18

OFF THE TIRE TRUCK AND LOADER/DOZER

SIZE		PINTS
1400	- 20	10
1400	- 24	11
1600	- 24	15
2100	- 24	18
1200	- 25	8
1400	- 25	11
15.5	- 25	13
1600	- 25	13
17.5	- 25	16
1800	- 25	16
20.5	- 25	15
23.5	- 25	18
2400	- 25	24
26.5	- 25	21
29.5	- 25	26
2400	- 29	25
29.5	- 29	26
1800	- 33	19
2700	- 33	32
30	- 33	31
33.5	- 33	35
2400	- 35	28
29.5	- 35	30
33.25	- 35	35
33.5	- 35	37
37.5	- 39	43
1800	- 49	24
3600	- 51	49

OFF THE ROAD ROCK LUG DEEP THREAD

SIZE		PINTS
1400	- 24	11
1600	- 24	13
1800	- 25	17
20.5	- 25	19
23.5	- 25	18
2400	- 25	24
29.5	- 25	29
65/35	- 33	40
2100	- 35	22
2400	- 35	25
33.25	- 35	33
2100	- 49	30
3300	- 51	54
3600	- 51	63

OFF THE ROAD SUPER DEEP L-5 LOADER

SIZE		PINTS
1200	- 24	8
1800	- 25	17
20.5	- 25	14
23.5	- 25	18
26.5	- 25	21
29.5	- 25	25
65/30	- 29	27
65/35	- 33	35
37.25	- 35	38
1400	- 24	11
1600	- 25	13
1800	- 25	17
25.5	- 25	19
23.5	- 25	23
26.5	- 25	26

- Continued -

SUPER DEEP L-5 LOADER

SIZE		PINTS
29.5	- 25	29
65/35	- 33	40
2100	- 35	22
2400	- 35	25
33.25	- 35	33
2100	- 49	30
3300	- 51	54
3600	- 51	63

INDUSTRIAL SMALL

FORKLIFTS, LOADERS AND MINE EQUIPMENT TIRES

SIZE		PINTS
280/250	- 4	1
400	- 4	1
4100/350	- 4	1
350	- 5	1
530/450	- 6	1
14/8	- 6	1
400	- 8	1
480/400	- 8	1
500	- 8	1
570/500	- 8	1
17/6	- 8	1
18/7	- 8	1
500	- 9	1
690	- 9	2
690/600	- 9	1
21/8	- 9	1
21/9	- 9	2
650	- 10	1
21/7	- 10	2
750	- 20	2
900	- 10	2
23/9	- 10	2
23/10	- 10	2
15	- 10	3
15L	- 10	3
570	- 12	2
700	- 12	2
023/850	- 12	2
27/1000	- 12	2
23/10	- 12	2
23/10.1	- 12	2
550	- 15	3
750	- 15	3
600	- 15	3
700	- 15	3
750	- 15	3
815	- 15	4
027/850	- 15	3
1000	- 15	5
27/1050	- 15	5
1100	- 15	6
28/12	- 15	4
27/12	- 15	4
32/12.1	- 15	4
28/12.5	- 15	4
14.50	- 15	4
750	- 16	4
900	- 16	5
10	- 16	5
12	- 16	6
825	- 18	5
15	- 19	6
40/19	- 19	1
23	- 21	15

- Continued -

SMOOTH COMPACTOR AND ROLLER TIRES

SIZE		PINTS
750	- 15	3
1000	- 15	5
750	- 16	3
825	- 20	4
900	- 20	6
1100	- 20	7
1300	- 24	8
1400	- 24	9
16.9	- 30	15

FLOTATION TIRES SAND RIB AND EARTH MOVING/FREE ROLLING TIRES

SIZE		PINTS
900	- 13	4
900	- 15	5
900	- 16	5
10.50	- 16	6
1100	- 16	6
1100	- 18	7
1100	- 20	7
1400	- 20	9
1600	- 20	10
24	- 20	14
24	- 21	14
27.25	- 21	17
1600	- 24	16
1800	- 24	17
21	- 24	20
1600	- 25	13
1800	- 25	16
29.5	- 25	26
2400	- 29	22

GRADER AND LOADER TIRE

SIZE		PINTS
700	- 20	4
750	- 20	4
825	- 20	5
1300	- 20	8
1400	- 20	10
1600	- 24	11
900	- 24	6
1000	- 24	7
1200	- 24	8
1300	- 24	9
1400	- 24	11
1600	- 24	13
750	- 25	5
1800	- 26	16
1400	- 28	12
1300	- 32	12
1400	- 32	13

OFF THE ROAD

DIRT TRACTION LOADER AND DOZER TIRE

SIZE		PINTS
2100	- 24	20
15.5	- 25	13
1800	- 25	16
20.5	- 25	15
23.5	- 25	18

— Continued —

SLOW SPEED TURF AND POWER IMPLEMENT TIRES

SIZE		PINTS
530/450	- 12	1
6	- 12	2
7	- 12	2
22/75	- 12	2
022/7.5	- 12	2
023/850	- 12	2
23/1000	- 12	2
23/1050	- 12	2
26/1200	- 12	3
5	- 14	2
500	- 14	2
6	- 11	2
500	- 15	2
670	- 15	3
27/850	- 15	3
29/1200	- 15	4
12.5L	- 15	5
31/1250	- 15	4
31/1350	- 15	5
650	- 16	3
7	- 16	3
750	- 16	3
8	- 16	3
800	- 16	3
38/2000	- 16	7
21. 5L	- 16	10
10.5	- 18	5
12.5	- 18	6
400	- 19	2
650	- 20	2
750	- 20	4
10.5	- 20	5
12.5	- 20	7
14.5/75	- 20	4
44/4100	- 20	9
500	- 21	2
1000	- 24	6

RIB IMPLEMENT TIRES

SIZE		PINTS
400	- 9	1
300	- 10	1
305	- 10	1
750	- 10	2
900	- 10	3
9.5L	- 10	4
300	- 12	1
350	- 12	1
400	- 12	1
400	- 14	1
8.5L	- 14	3
11L	- 14	4
400	- 15	1
590	- 15	2
640	- 15	2
670	- 15	3
025/750	- 15	6
760	- 15	3
760/700	- 15	3
8.5L	- 15	3
027/950	- 15	7
9.5L	- 15	3
1000	- 15	4
11L	- 15	4
29/1200	- 15	9
12.5L	- 15	5
600	- 16	2
650	- 16	3
750	- 16	3
800	- 16	4
900	- 16	4
11L	- 16	4
1000	- 16	4

— Continued —

— Continued —

RIB IMPLEMENT TIRES

SIZE		PINTS
14L	- 16	6
16.5L	- 16	7
19L	- 16	9
38/2000	- 16	7
21. 5L	- 16	10
400	- 18	2
13.0/65	- 18	2
750	- 18	4
650	- 20	3
750	- 20	4
750	- 24	5
900	- 24	6
11.25	- 24	8
11.25	- 28	8
1400	- 32	10

FRONT TRACTOR SINGLE RIB

SIZE		PINTS
550	- 16	2
600	- 16	3
750	- 16	4
1000	- 16	5
750	- 18	4
750	- 20	4
950	- 24	6

2 & 3 RIB FRONT TRACTOR TIRE

SIZE		PINTS
450	- 10	1
750	- 10	3
900	- 10	3
300	- 12	1
400	- 12	1
600	- 14	2
400	- 15	2
500	- 15	2
7.5L	- 15	3
9.5L	- 15	4
11L	- 15	4
550	- 16	2
600	- 16	3
650	- 16	3
750	- 16	4
1000	- 16	5
1100	- 16	6
14L	- 16	7
16.5L	- 16	8
750	- 18	4
400	- 19	3
600	- 19	2
650	- 20	3
750	- 20	4
950	- 20	5
10.50	- 20	6

FRONT TRACTOR MULTI-RIB AND INDUSTRIAL TIRES

SIZE		PINTS
900	- 10	3
950	- 15	5
11L	- 15	4
750	- 16	4
750/800	- 16	4
G800	- 16	4
1100	- 16	5
11L	- 16	4

— Continued —

— Continued —

FRONT TRACTOR MULTI-RIB AND INDUSTRIAL TIRES

SIZE		PINTS
100	- 16	5
14.5/18	- 16	9
38/19	- 16	19
36	- 17	36

REAR TRACTOR OPEN CENTER

SIZE		PINTS
1000	- 15	5
9.5	- 16	4
1350	- 16	8
18.4	- 16	12
750	- 18	4
10.5	- 18	5
12.5	- 18	7
10.5	- 20	6
12.5	- 20	8
44/4100	- 20	14
48/2500	- 20	12
42/2500	- 20	9
48/3100	- 20	13
500	- 21	1
750	- 22	4
9.5	- 22	5
400	- 24	2
7.2	- 24	4
750	- 24	4
8.3	- 24	4
11.2	- 24	6
12.4	- 24	7
13.6	- 24	8
14.9	- 24	9
16.9	- 24	11
67/3400	- 25	23
66/4300	- 25	26
14.9	- 26	9
16.9	- 26	11
18.4	- 26	13
23.1	- 26	17
28L	- 26	18
11.2	- 28	7
12.4	- 28	8
13.6	- 28	9
14.9	- 28	10
16.9	- 28	12
18.4	- 28	13
7.2	- 30	4
13.6	- 30	9
14.9	- 30	11
16.9	- 30	12
18.4	- 30	14
23.1	- 30	18
9.5	- 32	7
12.4	- 32	8
16.9	- 32	13
24.5	- 32	20
30.5 L	- 32	22
11.2	- 34	8
16.9	- 34	13
18.4	- 34	15
20.8	- 34	17
23.1	- 34	19
400	- 36	3
9.5	- 36	7
11.2	- 36	3
12.4	- 34	9
13.9	- 36	10

— Continued —

— Continued —

REAR TRACTOR OPEN CENTER

SIZE		PINTS
11.2	- 38	8
12.4	- 38	10
13.6	- 38	11
14.9	- 38	12
15.5	- 38	11
16.9	- 38	14
18.4	- 38	16
20.8	- 38	18
9.5	- 42	8
12.4	- 42	10
18.4	- 42	17
20.8	- 42	20

RICE & CANE TIRES

SIZE		PINTS
8.3	- 22	4
14.9	- 24	9
67/3400	- 25	23
16.9	- 26	11
18.4	- 26	13
23.1	- 26	18
28L	- 26	19
18.4	- 30	15
23.1	- 30	19
24.5	- 32	21
30.5	- 32	24
18.4	- 34	16
23.1	- 34	20
13.6	- 38	11
15.5	- 38	13
18.4	- 38	17
20.8	- 38	19

DIAMOND TREAD TIRES

SIZE		PINTS
9.5	- 16	4
12.4	- 16	4
13.6	- 16	6
13.50	- 16	6
16.5L	- 16	6
18.4	- 16	7
21. 5L	- 16	9
9.5	- 18	5
650	- 20	4
44/4100	- 20	14
8.3	- 24	5
9.5	- 24	6
11.2	- 24	8
14.9	- 24	12
16.9	- 24	10
13.6	- 24	5
16.9	- 26	12
18.4	- 26	12
23.1	- 26	15
28L	- 26	19
12.4	- 28	8
13.6	- 28	9
18.4	- 30	13
23.1	- 30	17
24.5	- 32	20
28.1	- 32	22
16.9	- 34	13

**INDUSTRIAL LUG
REAR TRACTOR
TIRES**

SIZE		PINTS
14.9	-24	11
16.9	-24	15
17.5L	-24	16
18.4	-24	16
19.5L	-24	17
21 L	-24	19
14.9	-28	12
16.9	-28	17
18.4	-28	18
21L	-28	20

LOGGING TIRES

SIZE		PINTS
18.4	-26	15
23.1	-26	20
28.1	-26	29
16.9	-30	15
24.5	-32	25
30.5	-32	31
3000	-33	32
30.5	-33	33

TRUCK-TRAILER TIRES

**CUSTOM FLEX STEEL LT
RADIALS**

SIZE		PINTS
6.70	-15.0	3
7.00	-15.0	3
7.50	-16.0	4
7.50	-17.0	4
8.00	-16.5	3
8.75	-16.5	3
9.50	-16.5	3
10.00	-16.5	3
12.00	-16.5	4
8.00	-19.5	4

GLASS GUARD LT

SIZE		PINTS
DE78.00	-14.0	3
DG78.00	-15.0	3
DH78.00	-15.0	3
DF78.00	-16.0	3
DH78.00	-16.0	3
DL78.00	-16.0	3
8.00	-16.5	3
8.75	-16.5	3
9.50	-16.5	3

CUSTOM MILER LT

SIZE		PINTS
7.00	-15.0	3
7.50	-16.0	4
8.00	-17.5	3
8.00	-16.5	3
8.75	-16.5	3
9.50	-16.5	3

TRACTION HI-MILER LT

SIZE		PINTS
16.00	-16.0	3
6.50	-16.0	3
6.70	-15.0	3
7.00	-13.0	2
7.00	-14.0	2
7.00	-15.0	3
7.00	-16.0	3

— Continued —

TRACTION HI-MILER LT

SIZE		PINTS
7.10	-15.0	3
7.50	-16.0	4
7.00	-17.5	3
8.00	-14.5	3
8.00	-17.5	3
9.00	-14.5	3
8.00	-16.5	3
8.75	-16.5	3
9.50	-16.5	3

SUPER HI-MILER LT

SIZE		PINTS
6.00	-16.0	3
6.50	-16.0	3
6.70	-15.0	3
7.00	-13.0	2
7.00	-14.0	2
7.00	-15.0	3
7.00	-16.0	3
7.50	-15.0	3
7.50	-16.0	4
8.25	-16.0	4
9.00	-16.0	5
7.00	-17.5	3
8.00	-17.5	3

HI-MILER WIDE TREAT

SIZE		PINTS
8.00	-16.5	3
8.75	-16.5	3
9.50	-16.5	3

RIB HI-MILER LT

SIZE		PINTS
6.00	-16.0	3
6.50	-16.0	3
6.70	-15.0	3
7.00	-13.0	2
7.00	-14.0	2
7.00	-15.0	3
7.00	-16.0	3
7.10	-15.0	3
7.50	-16.0	4
8.00	-16.5	3
8.75	-16.5	3

GLAS-GUARD XG LT

SIZE		PINTS
DG78.00	-15.0	3
DH78.00	-15.0	3
DF78.00	-16.0	3
DH78.00	-16.00	3
DL78.00	-16.0	3
8.00	-16.5	3
8.75	-16.5	3
9.50	-16.5	3

**CUSTOM XTRA GRIP
HI-MILER LT**

SIZE		PINTS
6.00	-16.0	3
6.50	-16.0	3
6.70	-15.0	3
7.00	-14.0	3
7.00	-15.0	3
7.00	-16.0	3
7.10	-15.0	3
7.50	-16.0	4
9.00	-16.0	5
7.00	-17.5	3
8.00	-17.5	3
8.00	-16.5	3
8.75	-16.5	3
9.50	-16.5	4

— Continued —

TRACTION SURE GRIP LT

SIZE		PINTS
6.00	-16.0	3
6.50	-16.0	3
6.70	-15.0	3
7.00	-13.0	2
7.00	-14.0	2
7.00	-15.0	3
7.00	-16.0	3
7.10	-15.0	3
7.50	-16.0	4
7.00	-17.5	3
8.00	-17.5	3
8.00	-16.5	3
8.75	-16.5	3
9.50	-16.5	3

ALL SERVICE LT

SIZE		PINTS
6.00	-16.0	3
6.00	-16.0	3
6.50	-16.0	3
7.00	-15.0	3
7.00	-16.0	3
7.50	-16.0	3
9.00	-16.0	5

CUSTOM HI-MILER LT

SIZE		PINTS
6.50	-16.0	3
6.70	-15.0	3
7.00	-14.0	2
7.00	-15.0	3
7.00	-16.0	3
7.50	-15.0	3
7.50	-16.0	4
7.00	-17.5	3
8.00	-17.5	3

**SUPER SINGLE TRUCK
TIRE**

SIZE		PINTS
8.00	-17.5	3
8.00	-19.5	4
10.00	-16.5	4
10.00	-16.5	3
10.00	-17.5	4
12.00	-16.5	4
14.00	-17.5	6
15.00	-19.5	7
15.00	-22.5	7
16.50	-19.5	8
16.50	-22.5	8
18.00	-19.5	8
18.00	-22.5	9
14.00	-17.5	5
15.00	-19.5	7
15.00	-22.5	8
16.50	-22.5	8
18.00	-19.5	8
18.00	-22.5	9
4019.00	-19.5	7
23.00	-21.0	13
10.00	-16.5	4
12.00	-16.5	4
15.00	-19.5	7

HEAVY TRUCK XTRA DUTY

SIZE		PINTS
8.25	-20.0	5
9.00	-20.0	6
10.00	-20.0	6
10.00	-22.0	7
11.00	-20.0	7
11.00	-24.0	8

**HEAVY TRUCK UNSTEEL
R-1**

SIZE		PINTS
7.50	-15.0	4
7.50	-17.0	4
7.50	-20.0	4
8.25	-15.0	4
8.25	-20.0	5
9.00	-20.0	6
10.00	-15.0	5
10.00	-20.0	6
10.00	-22.0	6
11.00	-20.0	7
11.00	-22.0	7
11.00	-24.0	7
11.00	-22.5	5
10.00	-22.5	5
11.00	-22.5	6
11.00	-24.5	6
12.00	-22.5	6

**HEAVY TRUCK
CUSTOM CARGO**

SIZE		PINTS
10.00	-20.0	6
10.00	-22.0	7
11.00	-22.5	6
11.00	-24.5	6

**HEAVY TRUCK
SUPER HI-MILER**

SIZE		PINTS
7.00	-17.0	4
7.00	-18.0	4
7.00	-20.0	3
7.50	-17.0	4
7.50	-20.0	4
8.25	-17.0	4
8.25	-20.0	5
9.00	-20.0	3
10.00	-20.0	6
10.00	-22.0	6
11.00	-20.0	7
11.00	-22.0	7
11.00	-24.0	7
7.00	-22.5	3
8.00	-19.5	4
8.00	-22.5	4
q 00	-22.5	5
10.00	-22.5	3
11.00	-22.5	6
11.00	-24.5	6
12.00	-22.5	4

**HEAVY TRUCK
HI-MILER SPECIAL**

SIZE		PINTS
8.25	-20.0	5
9.00	-20.0	5
10.00	-20.0	6
10.00	-22.0	7
11.00	-20.0	7
11.00	-22.0	7
11.00	-24.0	7
11.00	-22.5	6
11.00	-24.5	6

**HEAVY TRUCK
CUSTOM CROSS RIBS**

SIZE		PINTS
8.25	-20.0	5
9.00	-20.0	6
10.00	-20.0	6
10.00	-22.0	7
11.00	-20.0	7

— Continued —

—Continued—

**HEAVY TRUCK
CUSTOM CROSS RIB**

SIZE		PINTS
11.00	-22.0	7
9.00	-22.5	5
10.00	-22.5	5
11.00	-22.5	6
11.00	-24.5	6
12.00	-22.5	6

**HEAVY TRUCK
HI-MILLER CROSS RIB**

SIZE		PINTS
8.25	-20.0	5
9.00	-20.0	6
10.0	-20.0	6
10.00	-22.0	7
11.00	-20.0	7
11.00	-22.0	7
11.00	-24.0	8
10.00	-22.5	5
11.00	-22.5	6
11.00	-24.5	6

**HEAVY TRUCK
CROSS RIB SPECIAL**

SIZE		PINTS
9.00	-20.0	6
10.00	-20.0	6
10.00	-22.0	7
11.00	-20.0	7
11.00	-22.0	7
11.00	-24.0	5
11.00	-22.5	6
11.00	-24.5	6

**HEAVY TRUCK
CUSTOM XTRA GRIP**

SIZE		PINTS
7.00	-17.0	4
7.00	-18.0	4
7.00	-20.0	4
7.50	-17.0	4
7.50	-20.0	4
8.25	-20.0	5
9.00	-20.0	6
10.00	-20.0	6
11.00	-20.0	7
8.00	-19.5	4
9.00	-22.5	5
10.00	-22.5	5
11.00	-22.5	6

**HEAVY TRUCK
UNISTEEL L-1**

SIZE		PINTS
8.25	-20.0	5
9.00	-20.0	6
10.00	-20.0	6
10.00	-22.0	7
11.00	-20.00	7
11.00	-22.0	7
11.00	-24.0	7
9.00	-22.5	5

**HEAVY TRUCK
CUSTOM HI-MILER**

SIZE		PINTS
7.00	-18.0	4
7.50	-17.0	4
7.50	-20.0	4
8.25	-20.0	5
9.00	-20.0	6
10.00	-20.0	6
10.00	-22.0	6
11.00	-20.0	7
11.00	-22.0	7
12.00	-20.0	7
12.00	-24.0	8
13.00	-20.0	8
14.00	-20.0	9
14.00	-24.0	10
7.00	-15.0	3
7.50	-15.0	4
8.25	-15.0	4
9.00	-15.0	5
10.00	-15.0	5
11.00	-15.0	6
8.00	-19.5	4
9.00	-22.5	5
10.00	-22.5	5
11.00	-22.5	6
11.00	-24.5	6
12.00	-22.5	6

**HEAVY TRUCK
TRACTION HI-MILER**

SIZE		PINTS
6.50	-20.0	4
7.00	-17.0	3
7.00	-18.0	4
7.00	-20.0	4
7.50	-17.0	4
7.50	-20.0	4
8.25	-20.0	5
9.00	-20.0	6
10.00	-20.0	6
10.00	-22.0	6
11.00	-20.0	7
11.00	-22.0	7
8.00	-19.5	4
8.00	-22.5	4
9.00	-22.5	4
10.00	-22.5	5
11.00	-22.5	6
11.00	-24.5	6

**HEAVY TRUCK
XTRA DUTY RIB ML**

SIZE		PINTS
8.25	-20.0	5
9.00	-20.0	6
10.00	-20.0	6
10.00	-22.0	7
11.00	-20.0	7
11.00	-22.0	7
11.00	-24.0	8
12.00	-20.0	8
12.00	-24.0	9
11.00	-22.5	6
11.00	-24.5	7

**HEAVY TRUCK
CARGO HI-MIL**

SIZE		PINTS
9.00	-20.0	6
10.00	-20.0	6
10.00	-22.0	7
11.00	-22.5	6
11.00	-24.5	6

**HEAVY TRUCK
HI-MILER SXT**

SIZE		PINTS
10.00	-20.0	6
10.00	-22.0	7
11.00	-22.5	6
11.00	-24.5	6

**HEAVY TRUCK
RIB HI-MILER**

SIZE		PINTS
7.50	-15.0	4
8.25	-15.0	4
9.00	-15.0	5
10.00	-15.0	5

**HEAVY TRUCK
SRL-1**

SIZE		PINTS
8.25	-20.0	5
9.00	-20.0	6
10.00	-20.0	6
10.00	-22.0	7
11.00	-20.0	7
11.00	-22.0	7
11.00	-24.0	8
12.00	-20.0	8
12.00	-24.0	9
14.00	-20.0	10
14.00	-24.0	11
9.00	-22.5	5
10.00	-22.5	6
11.00	-22.5	6
11.00	-24.5	7
12.00	-22.5	7
12.00	-24.5	7
12.00	-21.0	8
12.00	-25.0	8
14.00	-21.0	10
14.00	-25.0	11

**HEAVY TRUCK
TRACTION SURE GRIP**

SIZE		PINTS
7.50	-20.0	5
8.25	-20.0	5
9.00	-20.0	6
10.00	-20.0	6

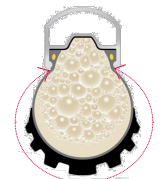
**HEAVY TRUCK
ALL SERVICE**

SIZE		PINTS
8.25	-20.0	5
9.00	-20.0	6
10.00	-20.0	6
11.00	-20.0	7
12.00	-20.0	7
14.00	-20.0	10

For tire sizes not shown, please write Texas Refinery for a more detailed list or use the following method of determining amount of TIRESEAL to be used: Measure circumference of outside of tire (in inches). Measure tire from bead to bead (in inches). Multiply circumference by beadbead measurement. Divide answer by 144. Multiply answer by .25 to determine number of pints of TIRESEAL needed.



circumference



from bead to bead



TIRESEAL PUMP

Lightweight and durable aluminum body. Piston and cylinder precision machined offering smooth continuous operation.

Pump delivers 1/2 pint with each complete stroke, easily and effortlessly.

Built for years-of service.

WARNING: This product is not to be used in tires which are installed on vehicles utilized for over-the-road service at speeds exceeding 45 miles per hour.

Tele: (817) 332-1161

Toll Free: 1-800-827-0711

Fax: (817) 335-8344

Toll Free Fax: 1-800-582-3329

www.texasrefinery.com

TEXAS REFINERY CORP

P.O. BOX 711

TEXAS • ONTARIO • SASKATCHEWAN • MEXICO