



\*Impact wrench not included

**READ INSTRUCTIONS THOROUGHLY BEFORE OPERATING**



**800.223.4540**

3451 S. 40th Street  
Phoenix, AZ 85040  
602.437.5020

www.tsissg.com  
info@tsissg.com  
Fax 602.437.5025

## GENERAL INFORMATION



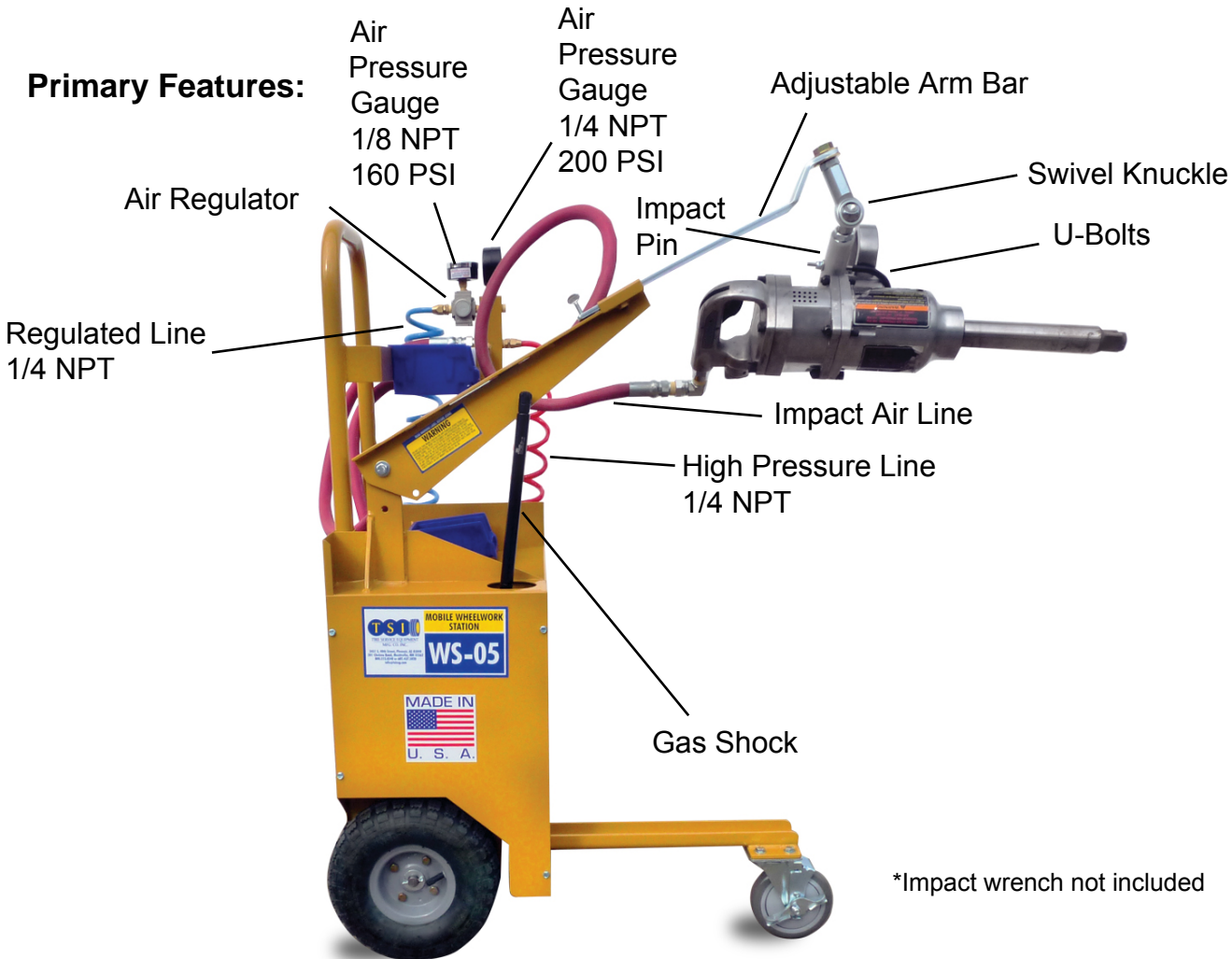
### WARNING!

**USE CAUTION! DO NOT** operate the workstation without first reading this manual and frequently asked questions. Failure to do so may result in injury or death.

Overview: Designed for faster and more efficient commercial truck tire and wheel changing operations

- Supports the weight of an impact wrench
- WS-05 moves in all directions and locks the impact wrench into a horizontal plane to prevent rounding of wheel nuts
- Provides significant reduction in impact wrench damage
- Relieves operator fatigue and helps reduce comp claims by preventing back injury.

### Primary Features:



### WARNING!

**The red hose is a high pressure line and can be used with jacks to lift up the trailer or other tools requiring high pressure air. The blue hose is a regulated line, used for checking and adjusting the pressure of a tire. Please install appropriate accessories to these lines before hooking up the main line.**

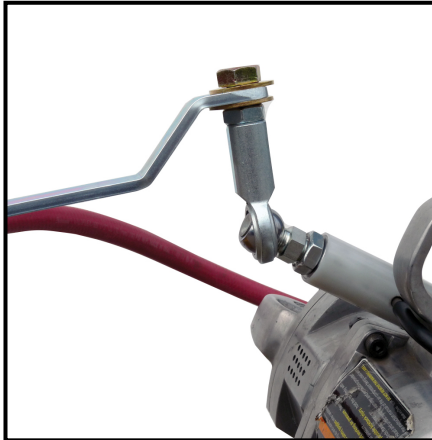
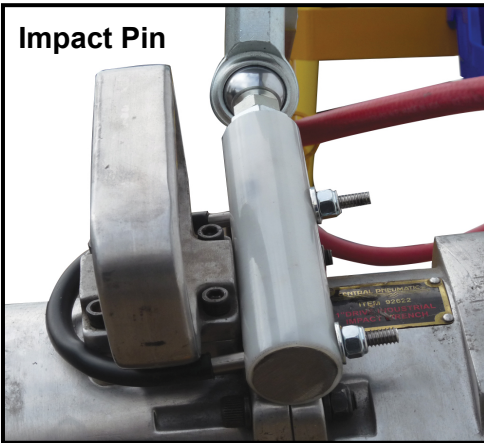
## OPERATION INSTRUCTIONS



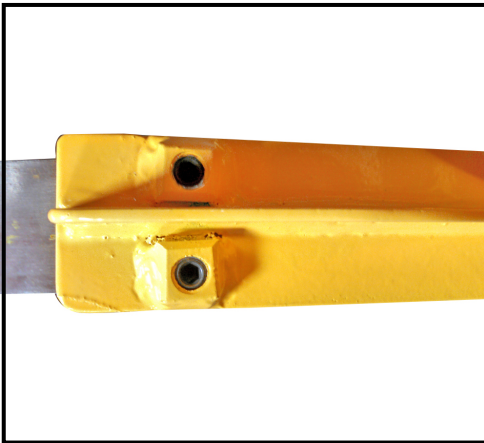
### WARNING!

FINISH installation first before connecting to your main air supply.

Impact Pin



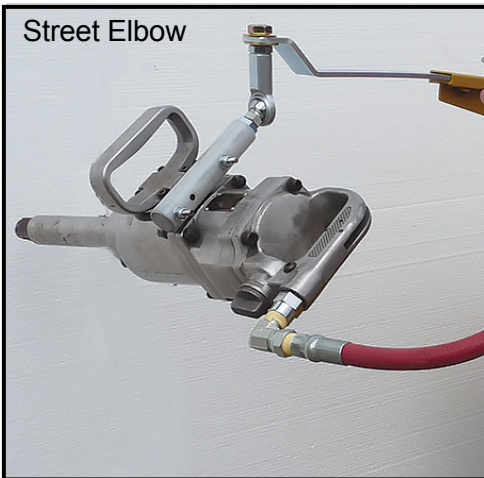
Install impact pin to gun by using the appropriate size U-bolt.



### \*\*CAUTION\*\*

Make sure the allen wrench screws found underneath the adjustable arm bar are secure before operating the Work Station.

Street Elbow



Install street elbow to gun. (Use teflon tape provided). After properly installing the elbow to the gun, you can now hook up the air line to the elbow



### WARNING!

Please follow manufacturer's specifications on air supply to gun and or accessories. Tire Service Equipment is not responsible for any damage caused by high pressure air supply.

## FREQUENTLY ASKED QUESTIONS

**Q: I connected the main air line, and when I hit the trigger on the gun nothing happens?**

A: Make sure the valve is in the open position, if problem persists check your main line or compressor valve for any leaks.

**Q: How do I oil the gun using the Work Station?**

A: The manifold has a plug that has an oil access area.

**Q: How can I check the pressure of a tire using the provided gauges?**

A: Hook up the air chuck to the blue hose (regulated line). Now use the air chuck to inflate the tire. If you want to check the air pressure of the tire, shut the main valve and this will display the air pressure of the tire you are inflating.

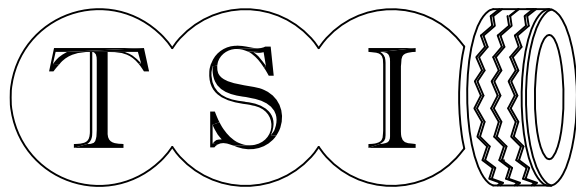


### **WARNING!**

**For adjustment inflation only. Not to be used for initial inflation as proper cage and equipment is required for this operation.**

**Q: The shock seems to be losing power and not lifting up the gun anymore, can I go to an auto parts store and get a replacement?**

A: It is important to contact your vendor and re-order a new gas shock for replacement. This is not a “car shock” and accurate pressure and sizing were utilized to make it appropriate for use with an impact wrench. Replacing this shock with a non OEM design can potentially cause damage or personal injury. It is dangerous to use a worn out or blown shock. Gas shocks should be replaced when it gets difficult to operate the unit, or after approximately 2 years in service.



# TIRE SERVICE EQUIPMENT

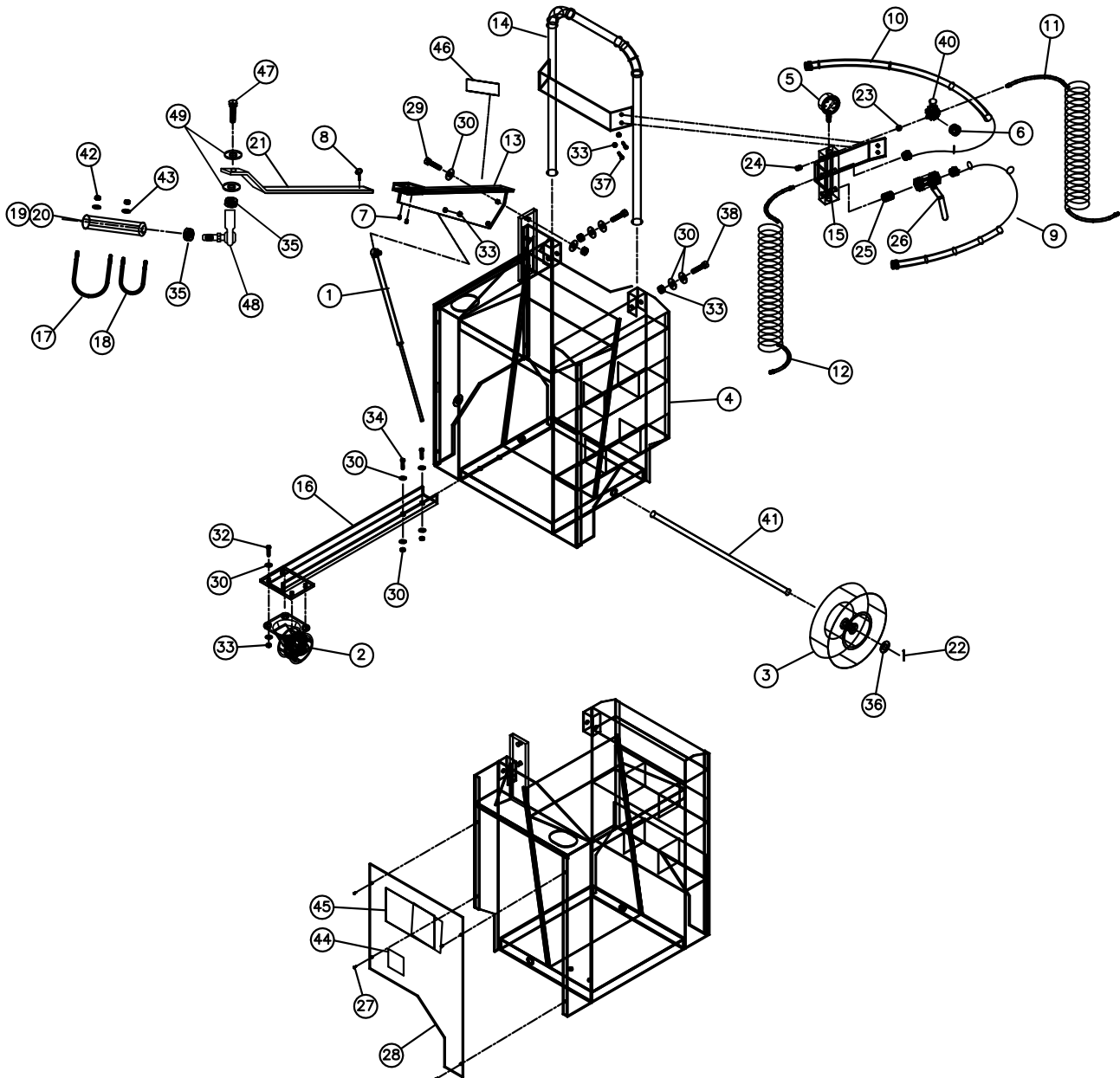
MFG. CO. INC.

PHOENIX, AZ \* MONTICELLO, MN

1-800-223-4540

WS-05

9-19-16



WS-05 PARTS LIST			
9/20/2016			
ITEM #	PART #	QTY	DESCRIPTION
1	11899	1	GAS SHOCK
2	11929	1	CASTOR WHEEL, FRONT
3	11628	2	WHEEL, MAIN ASSEMBLY
4	6471	1	MAIN ASSEMBLY WELDMENT
5	01.106	1	AIR PRESSURE GAUGE, 1/4 NPT 200 PSI
6	7.023A-200	1	AIR PRESSURE GAUGE, 1/8 NPT 160 PSI
7	1308	2	SET SCREWS TO SECURE SLIDER ARM
8	15222	1	SET SCREW TO MOUNT TO SLIDER ARM
9	12839	1	AIR HOSE, 1/2 I.D. W/1/2 NPT FITTINGS 33" LONG
10	12840	1	AIR HOSE, 1/2 I.D. W/1/2 NPT FITTINGS 80" LONG
11	12841	1	AIR LINE, 1/4 NPT 15' LONG (BLUE)
12	12842	1	AIR LINE, 1/4 NPT 15' LONG (RED)
13	6467	1	ADJUSTABLE ARM, WELDMENT
14	6469	1	HAND RAIL, WELDMENT
15	6470	1	AIR LINE BLOCK, WELDMENT
16	6472	1	WHEEL ARM, WELDMENT
17	11931	1	U-BOLT, LARGE
18	11932	1	U-BOLT, SMALL
19	11954	1	NYLON SLEEVE, 1" DIAMETER
20	11955	1	MACHINED HANDLE (Impact Pin)
21	12813	1	ADJUSTABLE ARM BAR
22	1436	2	COTTER PIN TO SECURE WHEELS
23	778	1	1/4 NIPPLE
24	128	1	1/4 PLUG
25	149	1	1/2 NIPPLE
26	6851602	1	BALL VALVE 1/2"
27	1055	4	SELF TAPPING SCREWS, 10-24 X 1/2"
28	12805	1	SIDE COVER
29	447	1	HHCS 3/8-16 X 1-1/4 PLATED
30	1318	12	WASHER, 5/16 WROUGHT
31	123.055	3	NUT, HEX 3/8-16 LOCK
32	3405	4	HHCS 5/16-18 X 1
33	566	7	NUT, HEX 5/16-18 NYLOCK
34	1306	2	HHCS 3/8-16 X 1 GR5
35	3671	1	NUT, HEX JAM STD 5/8-18 UNF
36	987	2	WASHER, 5/8 WROUGHT
37	1737	2	HHCS 5/16-18 X 3/4 GR5
38	3406	2	BOLT 5/16-18 X 1-3/4
39	12845	2	PLASTIC HARDWARE TRAYS (NOT SHOWN)
40	15.190	1	AIR REGULATOR 1/4 NPT
41	12819	1	AXLE ROD
42	226	2	NUT, HEX 1/4-20 NYLOCK
43	445	2	WASHER, 1/4" FLAT WROUGHT
44	12846	1	USA DECAL

45	12847	1	WS-05 MAIN DECAL
46	12848	1	WARNING DECAL
47	12859	1	HCS 5/8-18 X 1 1/2 BOLT
48	12860	1	5/8 RH FEMALE ECO ROD END W/STUD ( SWIVEL KNUCKLE)
49	12861	2	BRASS 5/8 FLAT WASHER

# Warranty Statement & Return Policy

Warranty & Workmanship you can depend on.

With over 25 years of manufacturing experience we maintain the ability to provide competitive prices while employing and manufacturing the majority of our products in the USA. Pride in our workmanship and standing behind each and every product is not just our claim but our uncompromising responsibility.

TSISSG equipment is warranted to be free from defects in materials and workmanship for a period of one year from the date of original purchase to the original owner. Repair labor is warranted for 90 days from the date of original purchase. Bushings, blades, bearings and normal wear and tear are not covered under warranty. Careless handling, negligence, misuse, abuse, mutilation, improper operation, making unauthorized repairs, additions, and or alterations automatically cancel this warranty and relieves TSISSG of any obligation. Cheetah tanks claimed to be defective while under warranty will be evaluated at our manufacturing plant and either repaired if possible or exchanged and returned or credit issued to the customer account at our discretion. Damage resulting from dropping the tanks will not receive warranty consideration. Warranty parts need to be returned prepaid to the plant for credit. Any replacement parts shipped from the plant will be shipped at the customer's expense. Machines requiring warranty work must be brought to the manufacturing plant in 201 Chelsea Rd, Monticello, MN or to a repair facility authorized by TSISSG.

## Return Policy:

***!!WARNING!! Goods returned without an RGA will be refused. A Returned Goods Authorization form must be obtained before returning any material or goods. All non-warranty returns will be subject to a 15% restocking fee plus any additional charges for reconditioning/repacking.***

